

0772-KO_121 GL

Kommode

REPC-Nr.:

Service • Assistenza • Dienstverlening • Servis
Servis • Szerviz • Сервисная служба

	<p>90 min</p>		Colli 1/4 : (13) (14) (15) (16) (17) (18) (19) (20) (21) (22) (23) (24)	Colli 2/4 : (2) (3) (4) (9) (10) (11)	Colli 3/4 : (1) (5) (6) (7) (8) (12) Beutel 1/5, 2/5, 3/5, 4/5, 5/5
			Colli 4/4 : (25)		

CHICAGO

Beutel 1/5

1-10 2x		1-30 64x		1-70 4x		1-80 14x		1-90 4x		1-122 4x	
1-200 18x		2-08 8x		2-10 20x		2-20 28x		2-160 8x			

Beutel 2/5

1-123 12x		2-173 6x		3-07 2x		3-11 6x		3-42 6x	
--------------	--	-------------	--	------------	--	------------	--	------------	--

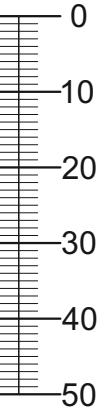
Beutel 3/5

Beutel 4/5

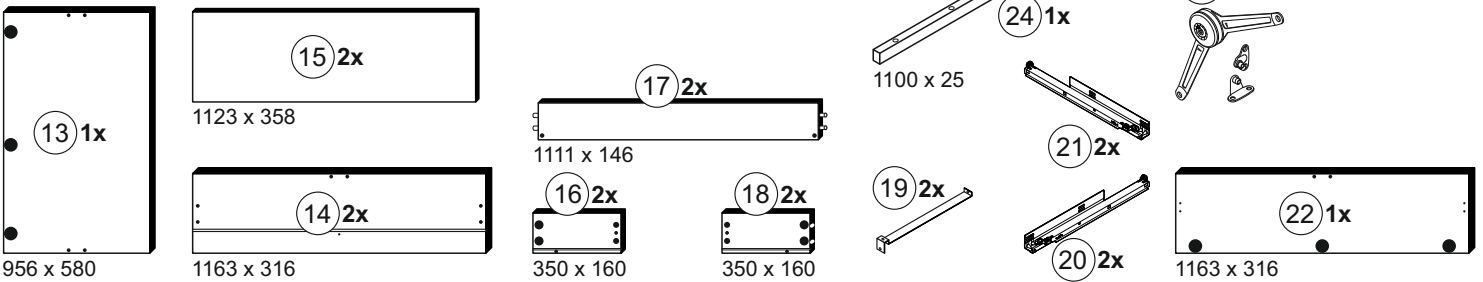
2-103 12x		5-01 6x		5-130 2x		5-185 4x	
5-260 1x		5-265 1x		5-280 1x		6-425 4x	

Beutel 5/5

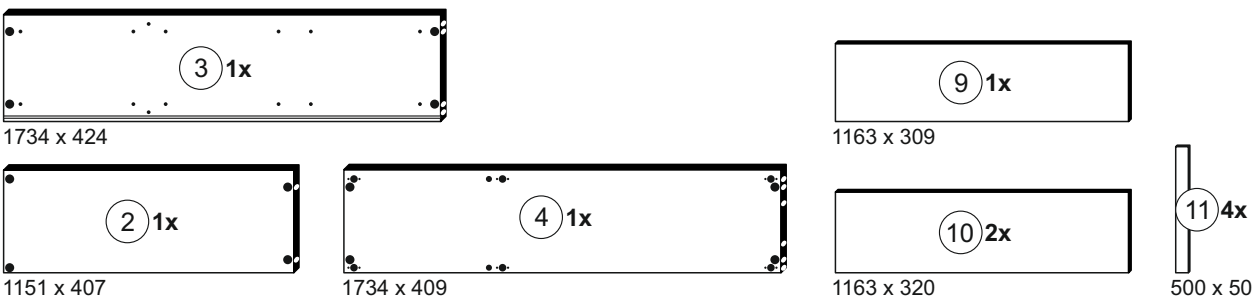
1-36 4x	
------------	--



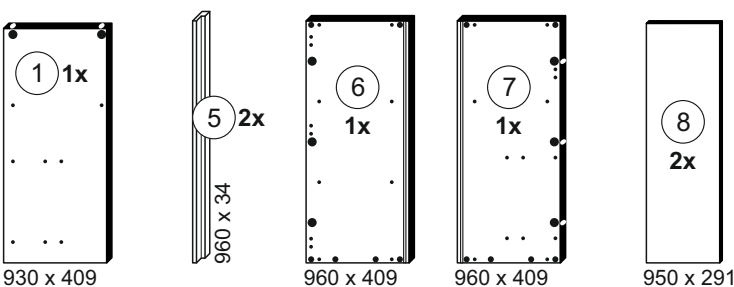
Colli 1/4



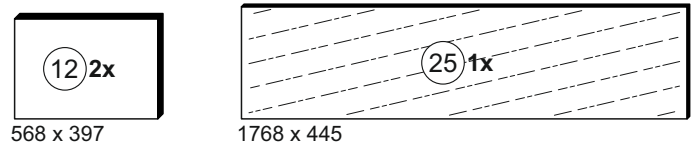
Colli 2/4

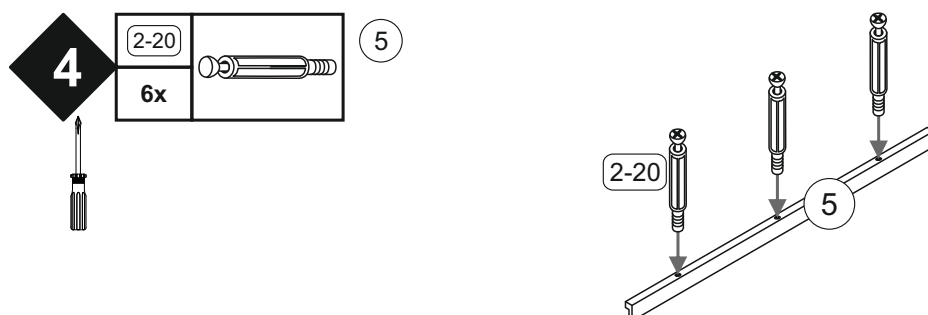
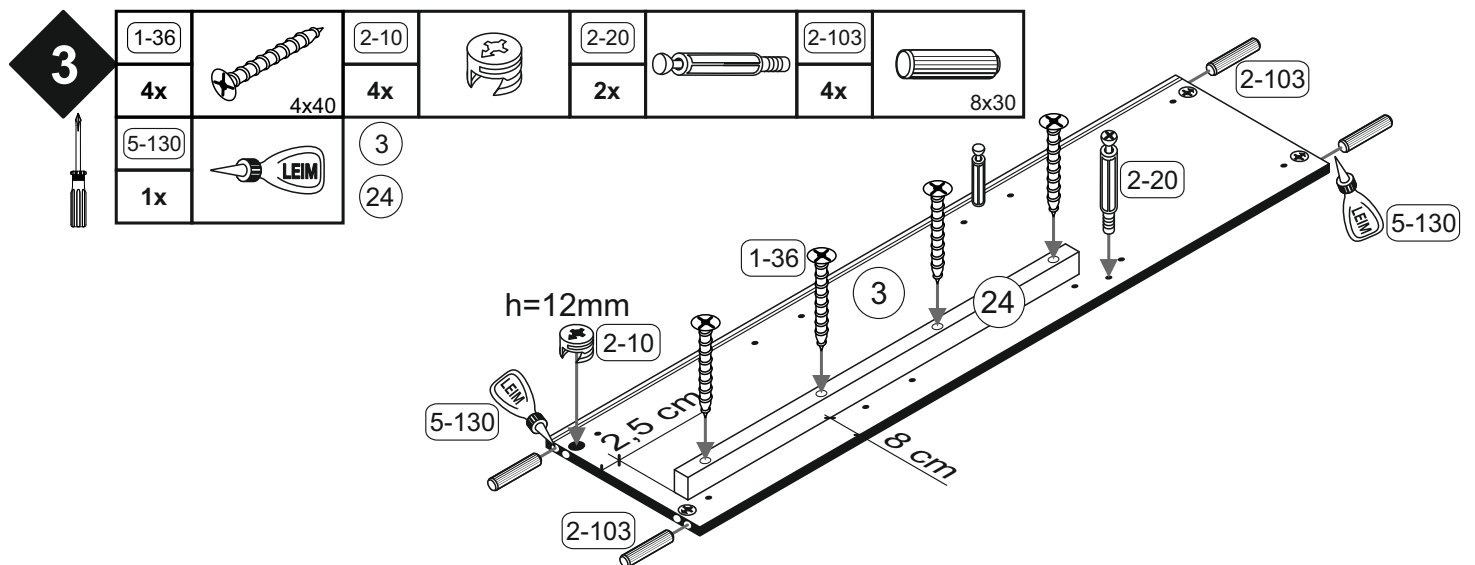
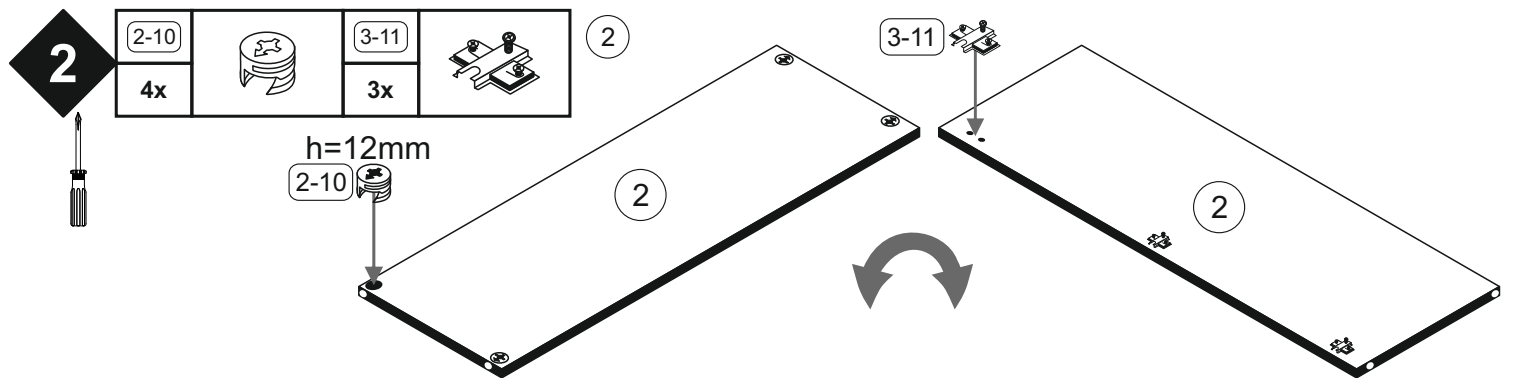
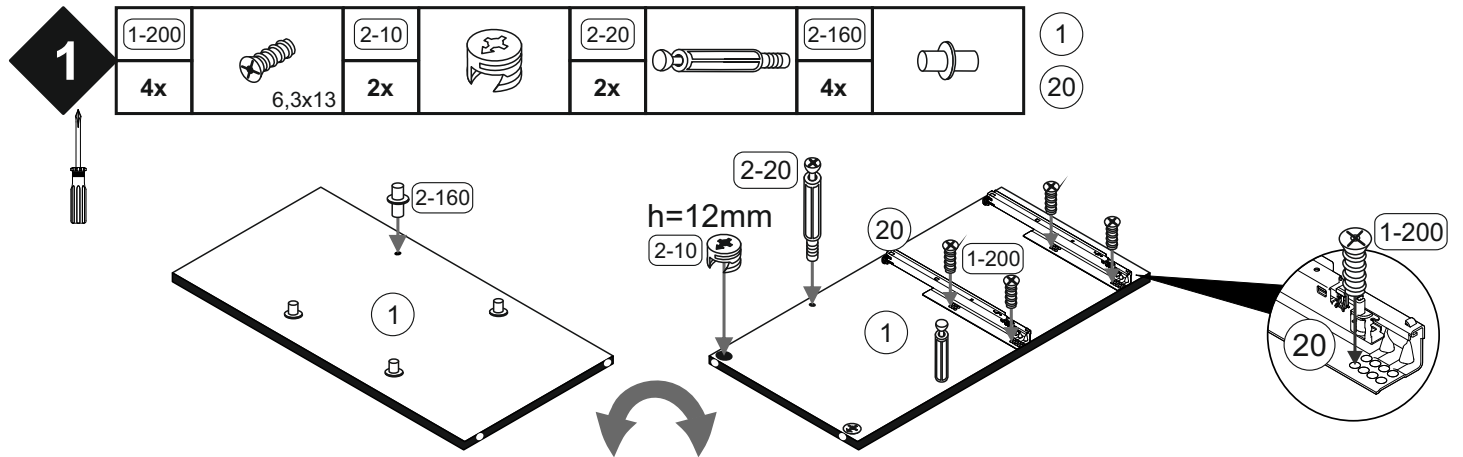


Colli 3/4

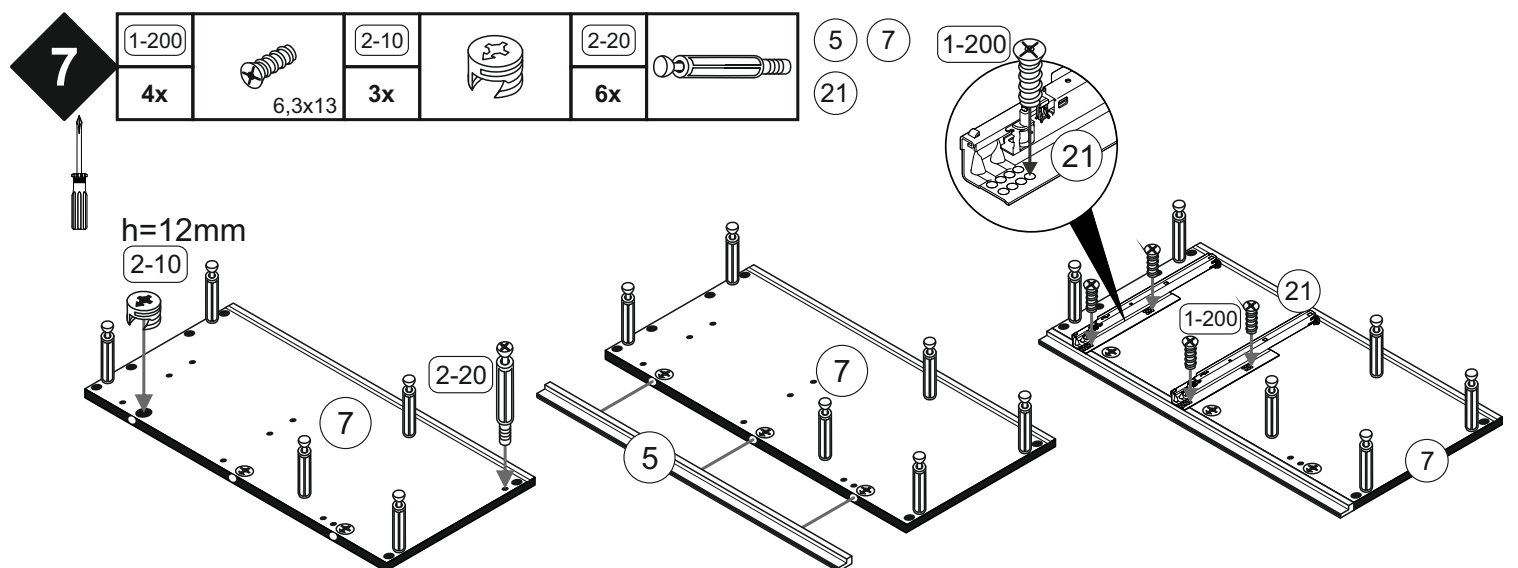
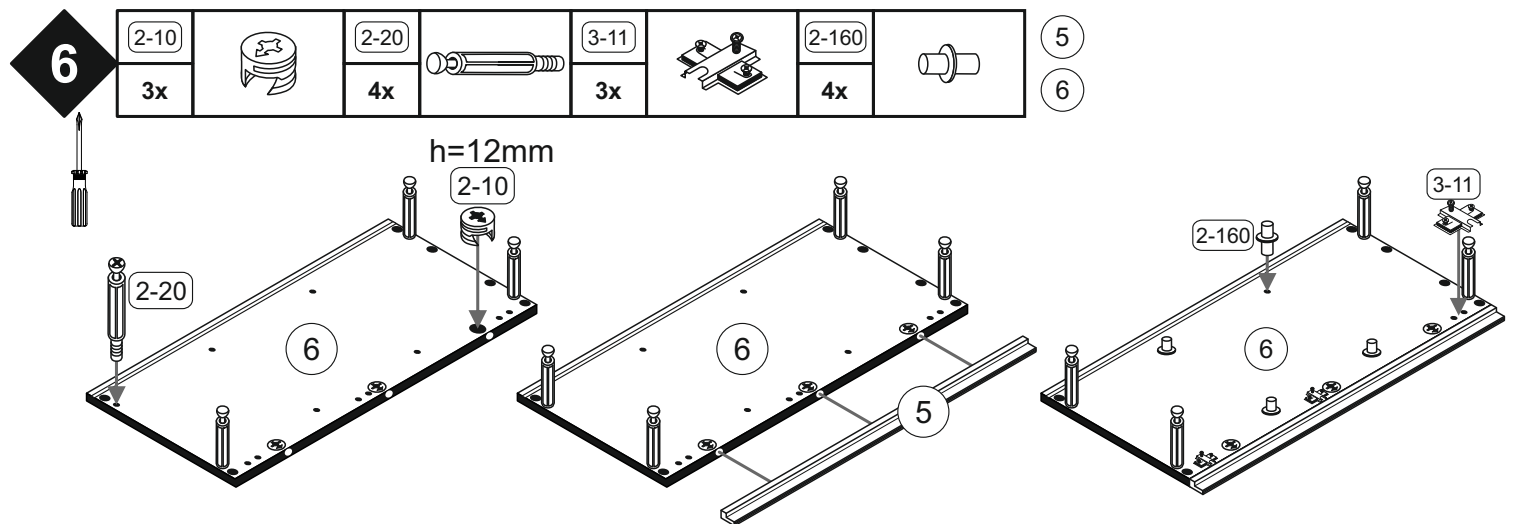
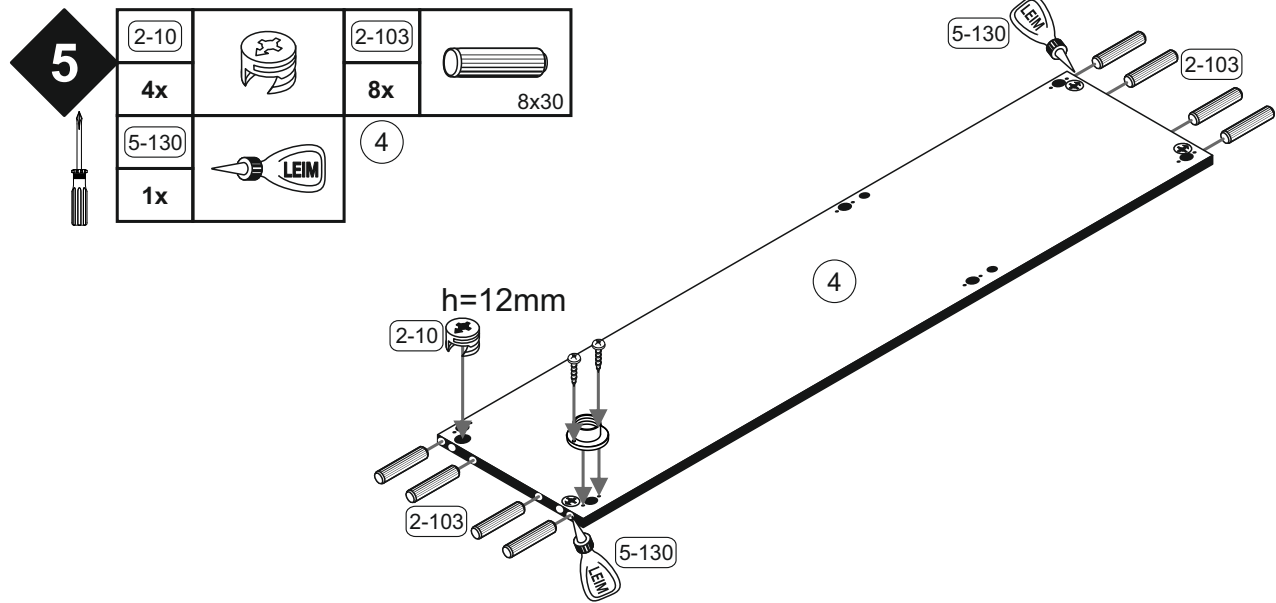


Colli 4/4





CHICAGO

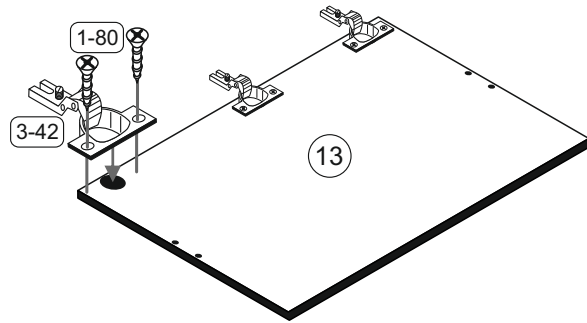


CHICAGO

8

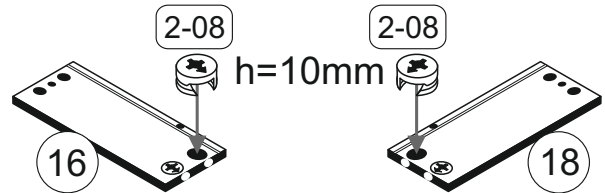
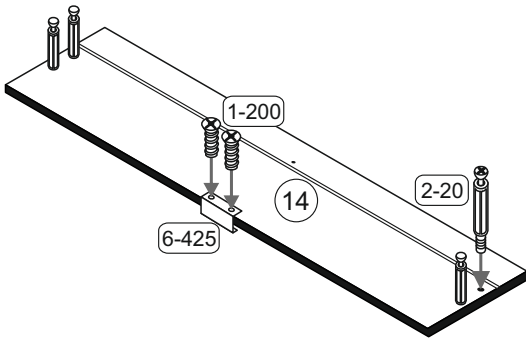
1-80		3-42	
6x	3,5x13	3x	8er

13



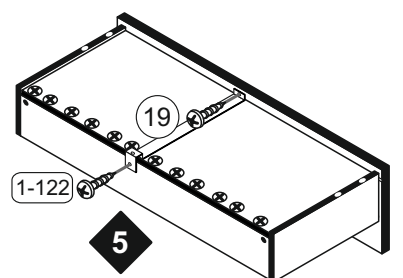
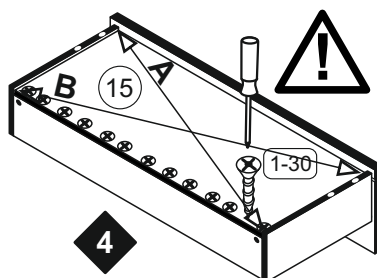
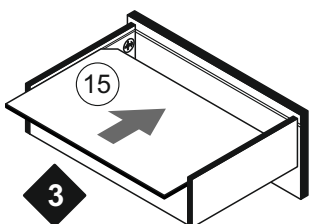
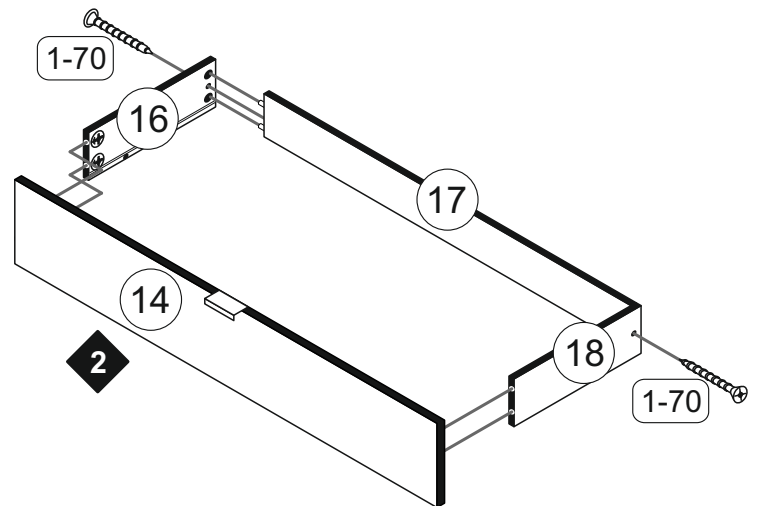
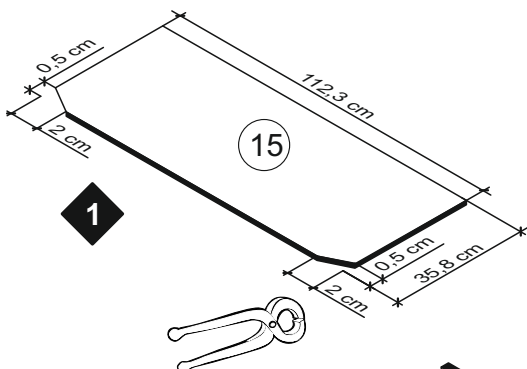
9

1-200		2-08		2-20		6-425		14	16
4x	6,3x13	8x		8x		2x		18	




10



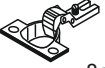
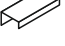
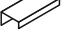
1-30		1-70		14	15	16
26x	3x16	4x	3x30	17	18	19
1-122						
4x	4x13					



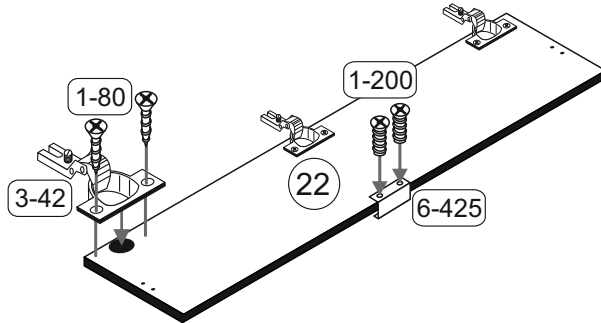
CHICAGO

11





1-80		1-200	
6x	3,5x13	2x	6,3x13
3-42		6-425	
3x	8er	1x	

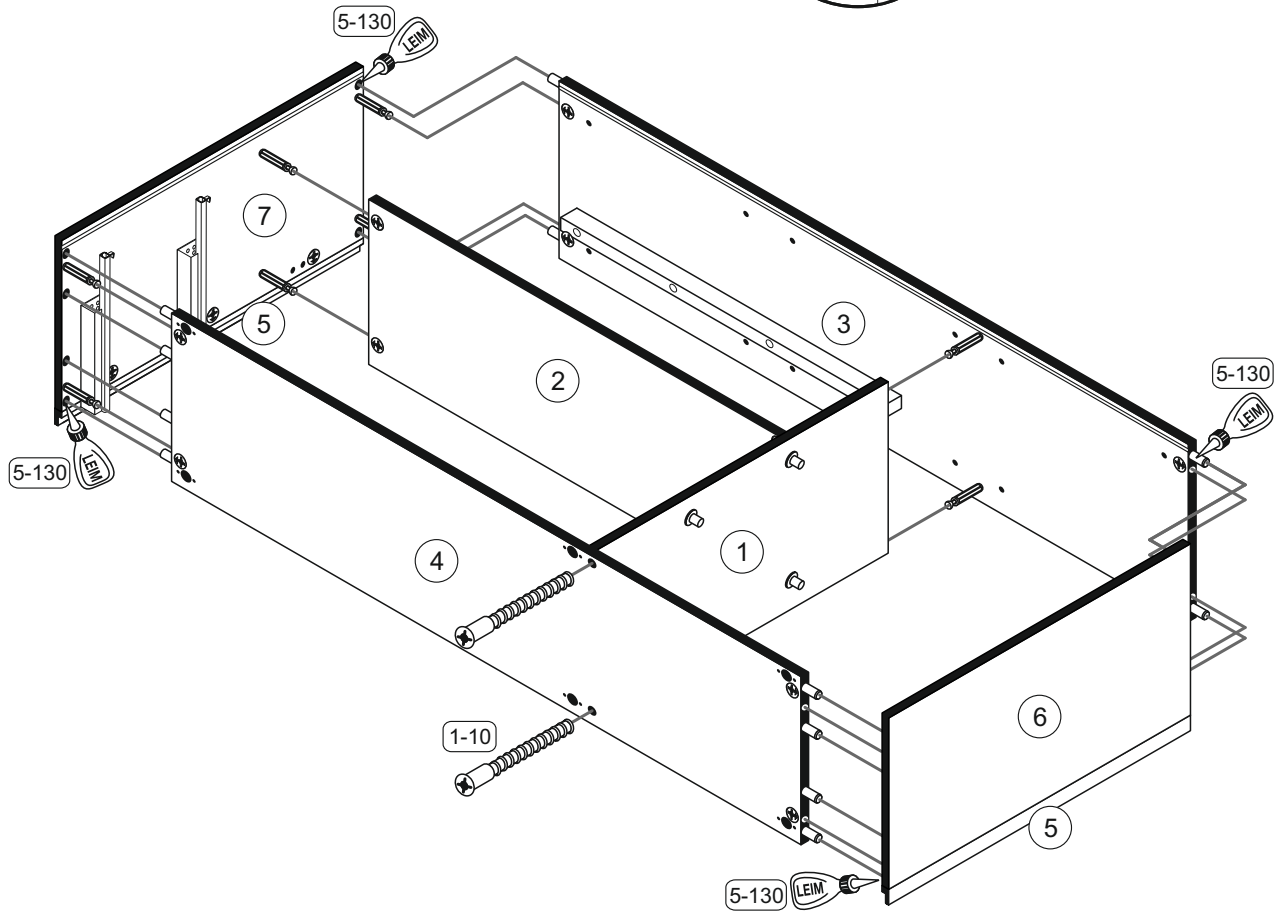
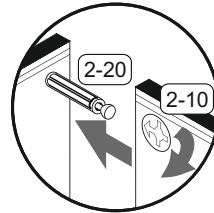
22



12



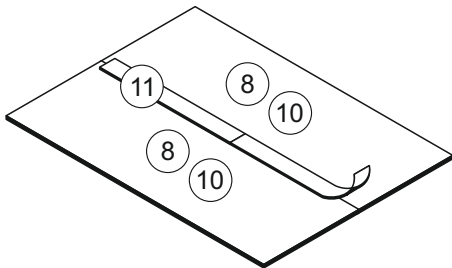
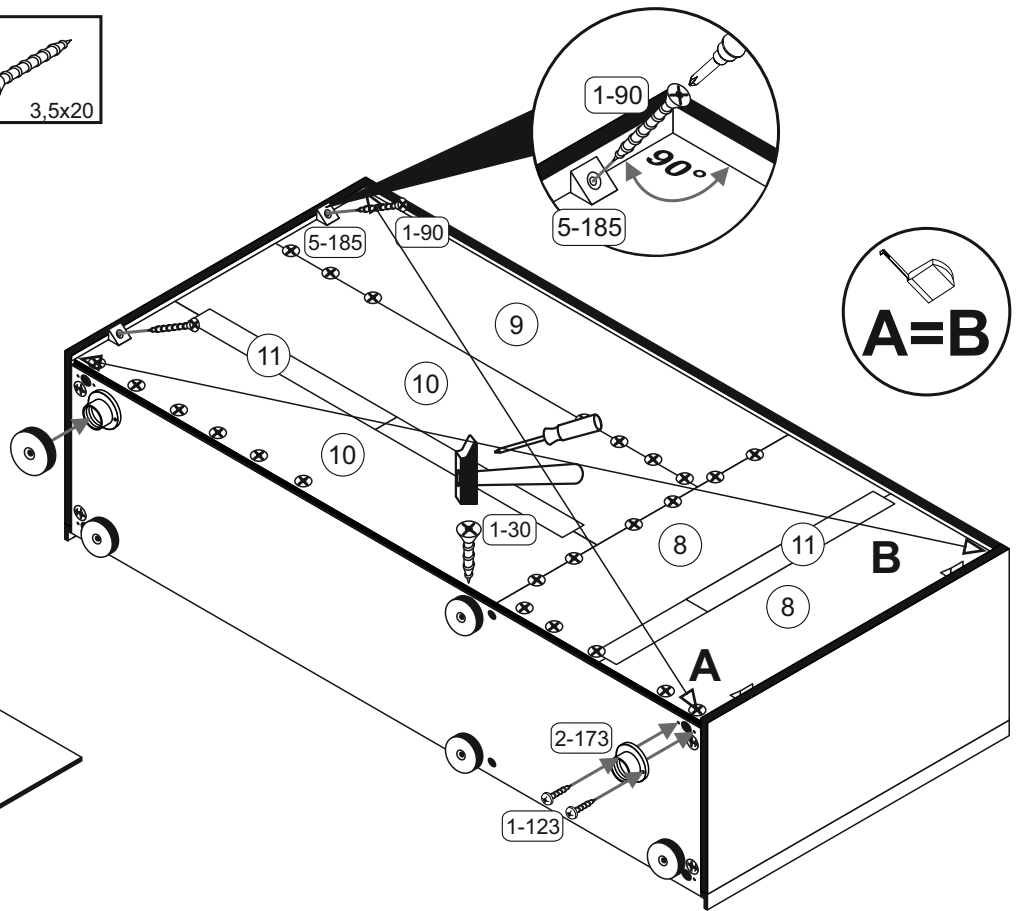
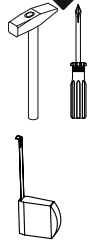
1-10		5-130	
2x	6,3x50	1x	LEIM



CHICAGO

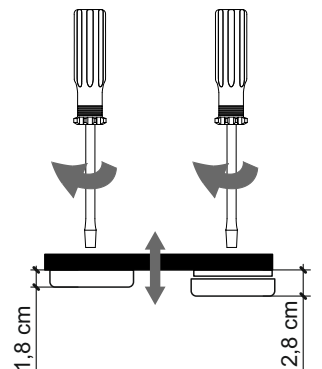
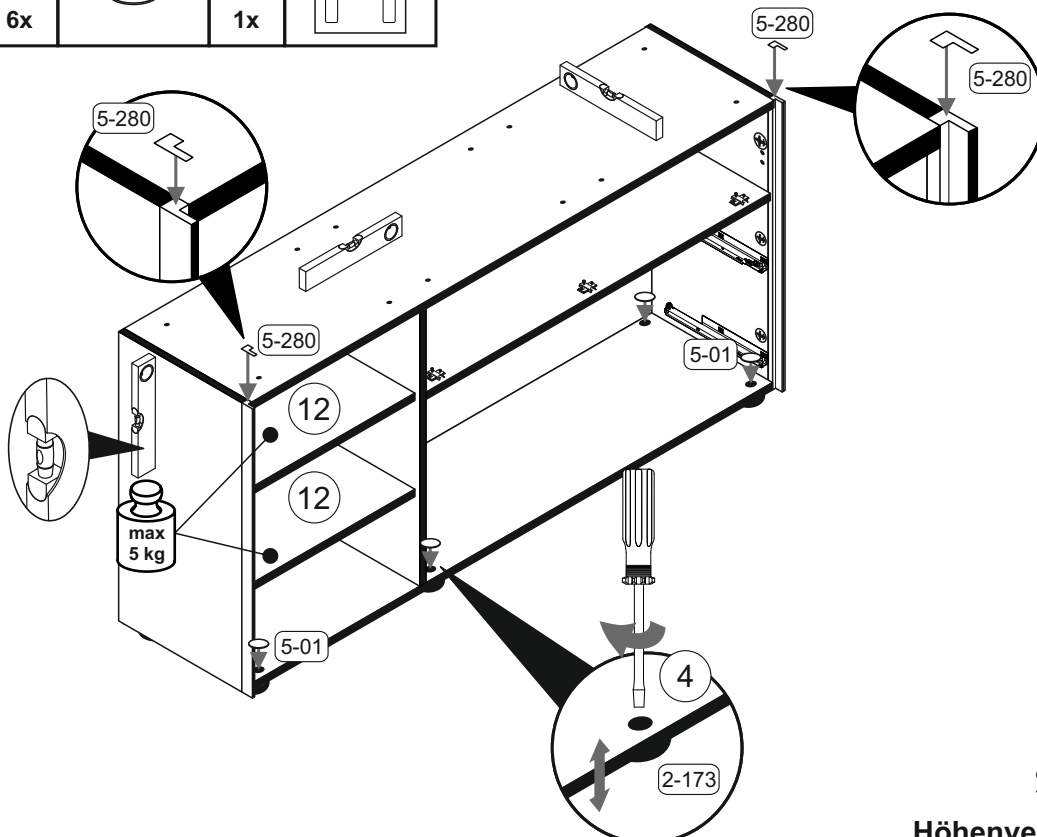
13

1-30		1-90	
38x	3x16	4x	3,5x20
1-123			
12x	4x15		
5-185			
4x			
2-173			
6x			



14

5-01		5-280	
6x		1x	

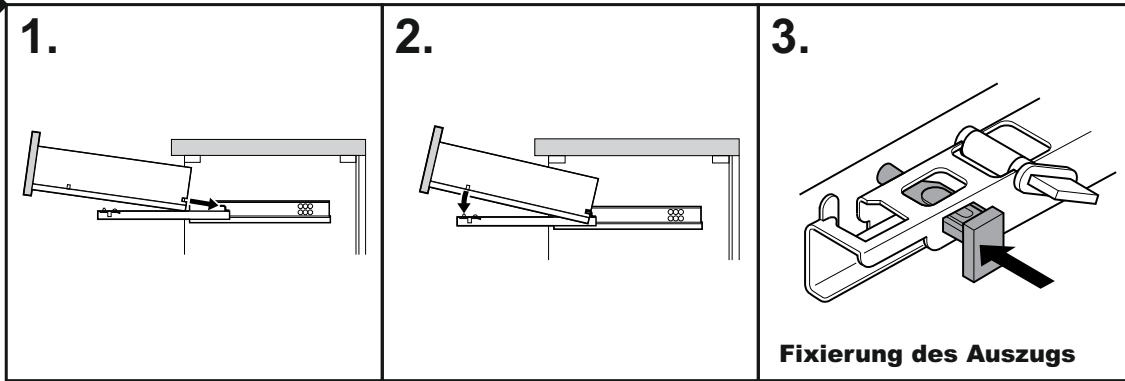


Höhenverstellung der Möbelfüße

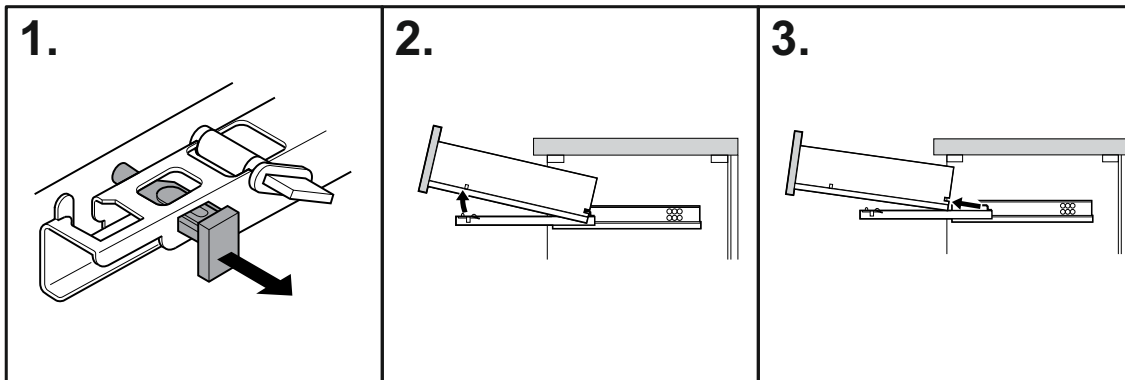
CHICAGO

15

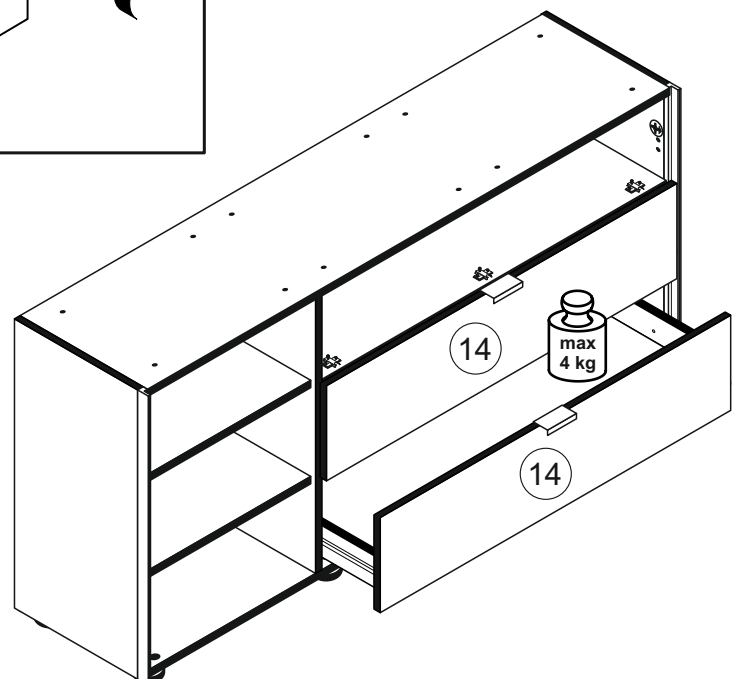
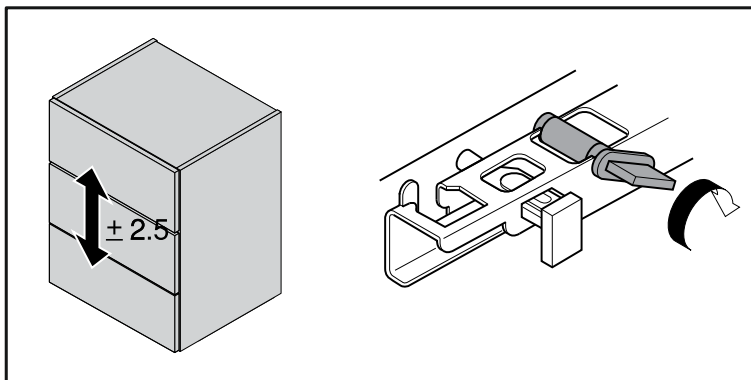
Einbau des Schubkastens



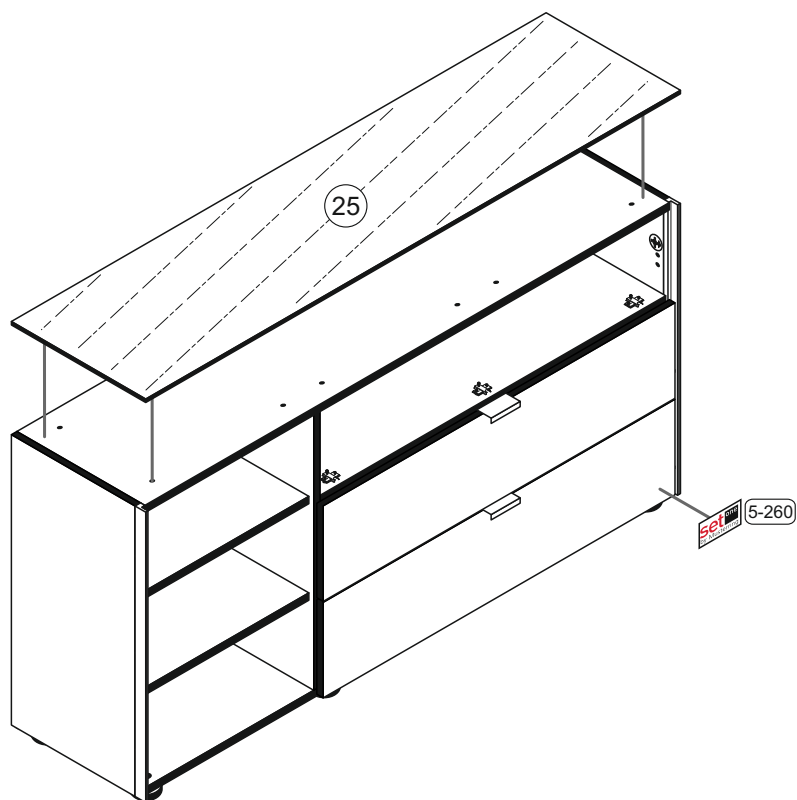
Ausbau des Schubkastens



Höhenverstellung des Schubkastens

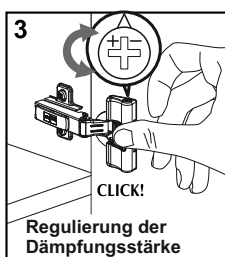
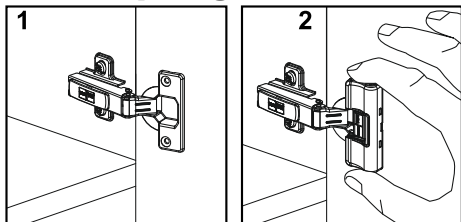


16 5-260
1x **set one**
by Musterring

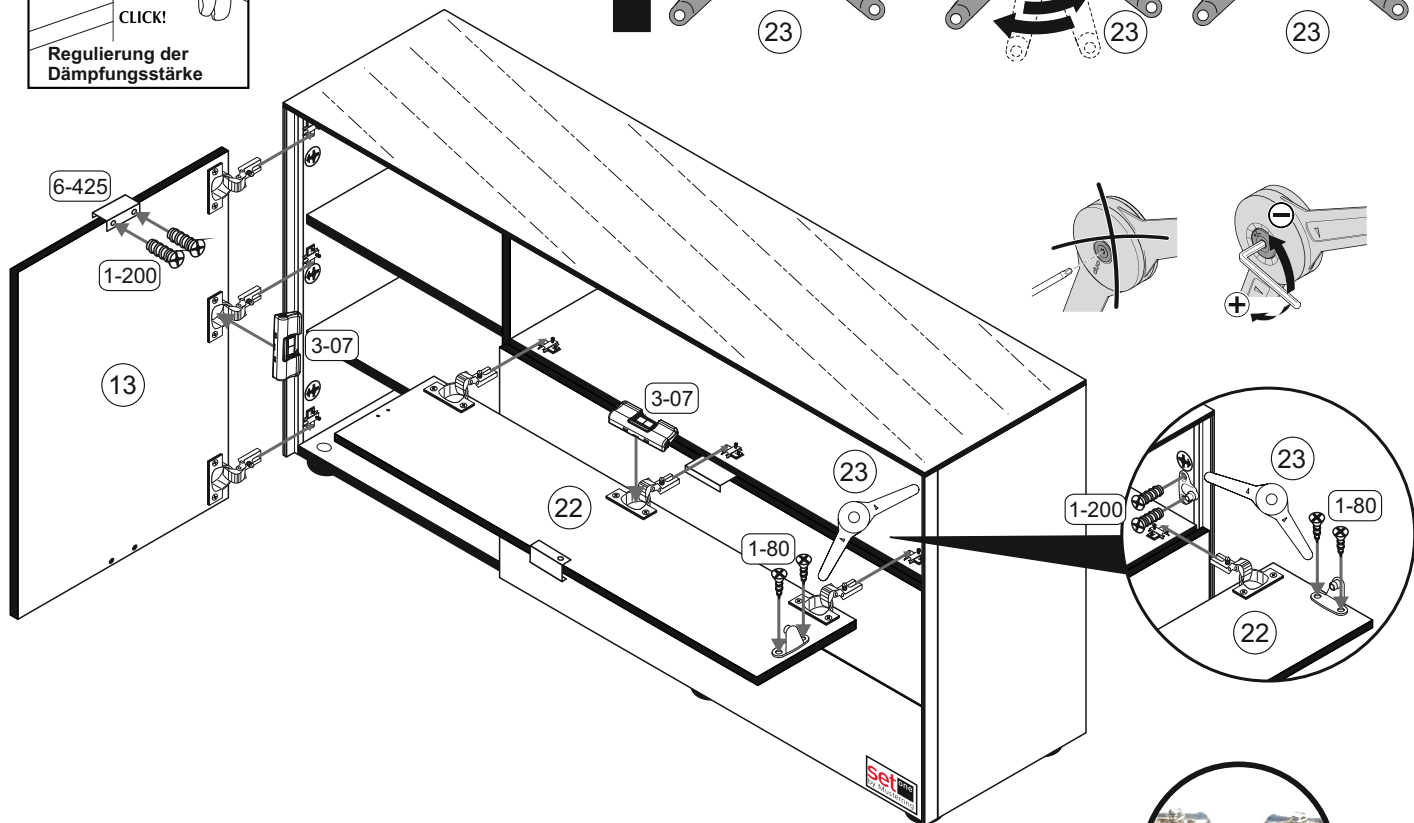
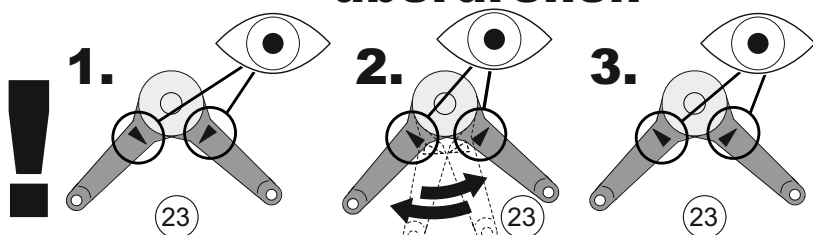


17	1-80	1-200	3-07	6-425	
	2x	4x	2x	1x	
	3,5x13	6,3x13			

Montage der Türdämpfung



Stütze unten 23 überdrehen



Türen einstellen (Scharniere justieren)
 Adjusting the doors (adjusting the hinges)
 Régler les portes (ajuster les charnières)
 Sistemare le porte (regolare le cerniere)
 Deuren instellen (scharnieren afstellen)
 Nastawić drzwi (wyregulować zawiasy)
 Vyrovnajte dviřka (seřid'te zavěsy)
 Nastavenie dverı (nastavenie zavesov)
 allıtısa be az ajtokat (allıtısa be a zsanerokat)
 Reglare uși (ajustare balamale)
 Kapıların ayarlanması (menteşelerin seviye ayarı)
 Регулировка дверей (регулировка шарнира)

