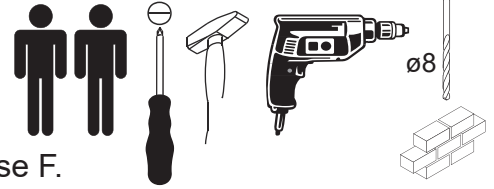


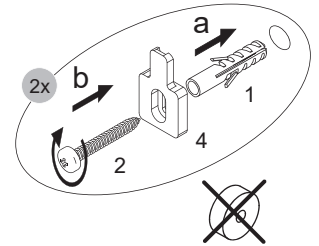
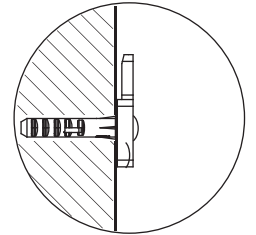
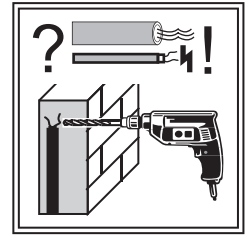
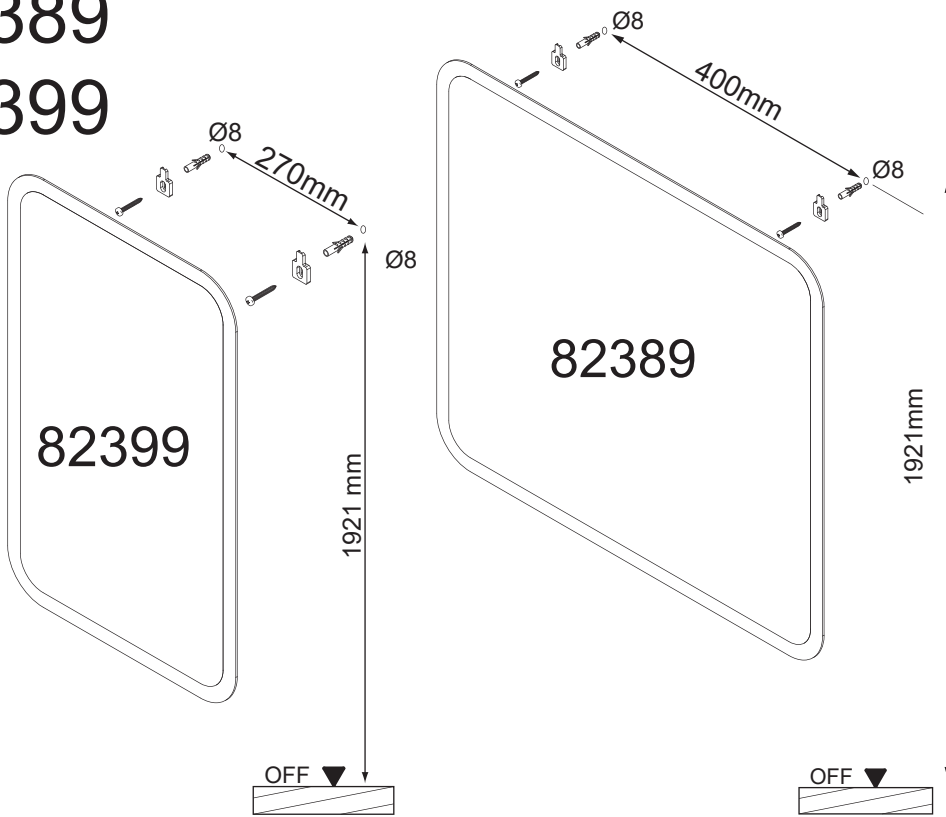
FACKELMANN®



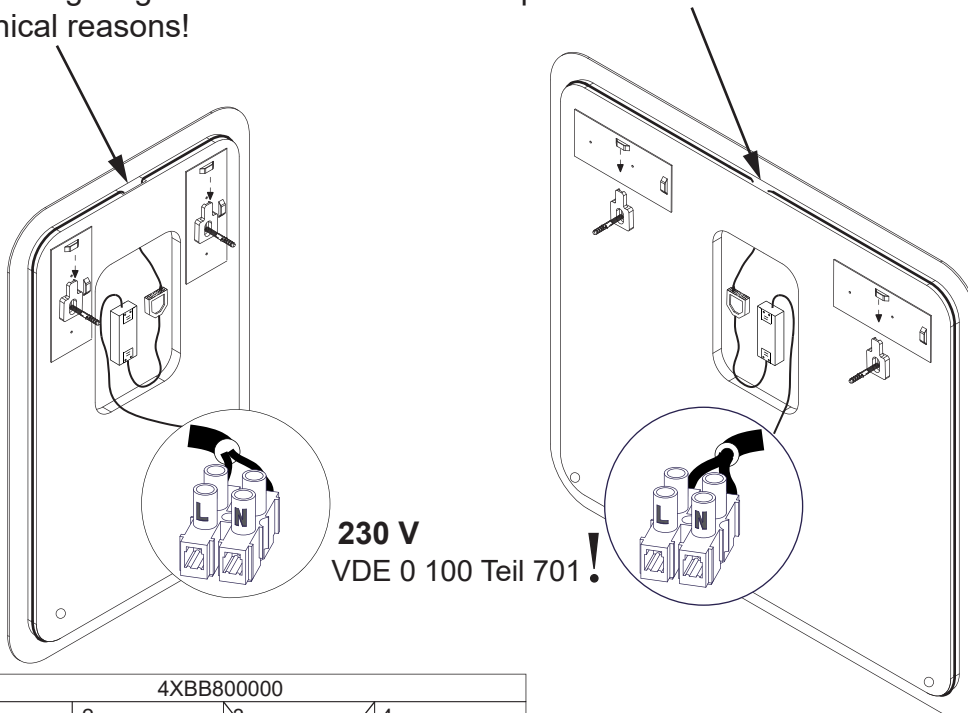
Dieses Produkt enthält eine Lichtquelle der Energieeffizienzklasse F.
This product contains a light source of energy efficiency class F.

82389

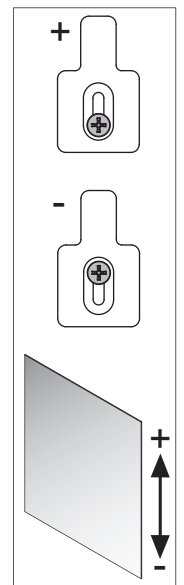
82399

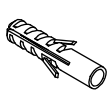


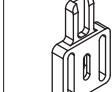


Aus technischen Gründen ist an der Anschlussstelle der LED-Leitung keine optimale Ausleuchtung möglich!
Optimal lighting at the LED-interface is impossible because of technical reasons!

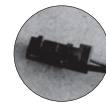
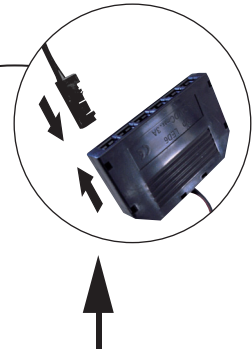
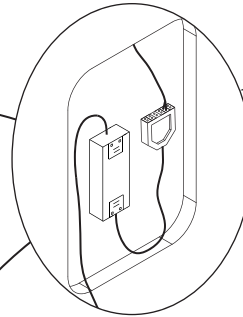
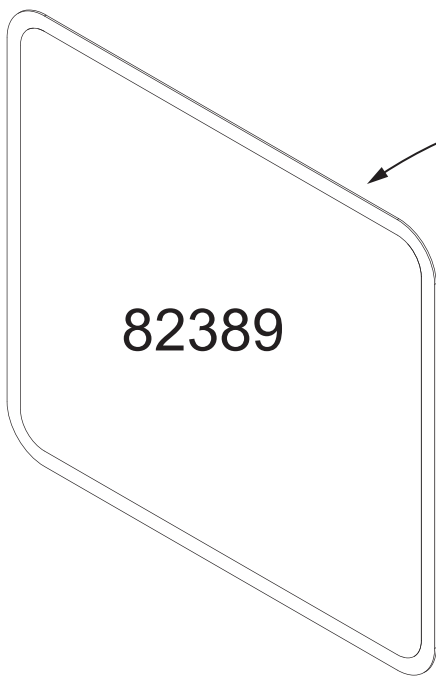


230 V
VDE 0 100 Teil 701 !



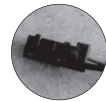
4XBB800000			
1	2	3	4
			
2 x	2 x	2 x	2 x

FACKELMANN® GmbH + Co. KG
Sebastian-Fackelmann-Str. 6
91217 Hersbruck • Deutschland
FAX: 09151/811-294
Servicetelefon: 09151/811-206
servicebm@fackelmann.de
www.fackelmann.com



Anschlussmöglichkeit für:

- 82323 SCENO Hängeschrank
- 82353 SCENO Hochschrank
- 82354 SCENO Hochschrank
- 82363 SCENO D-Hochschrank
- 82364 SCENO D-Hochschrank

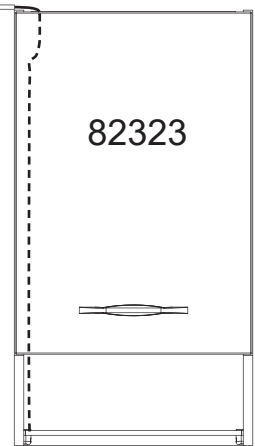
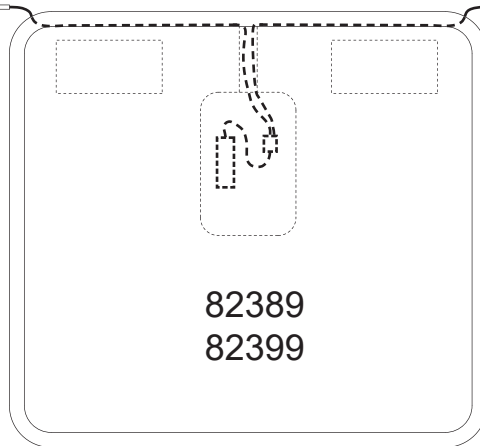
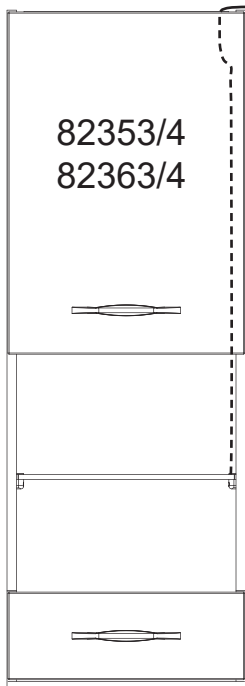


Connection for:

- 82323 SCENO Hanging cabinet
- 82353 SCENO Tower cabinet
- 82354 SCENO Tower cabinet
- 82363 SCENO Tower cabinet
- 82364 SCENO Tower cabinet

2SL0819890

2SL0819890



Ansicht von vorne
Front view

FACKELMANN



Austausch LED-Band/
change of LED-stripe

Ersatzteil/ replacement part

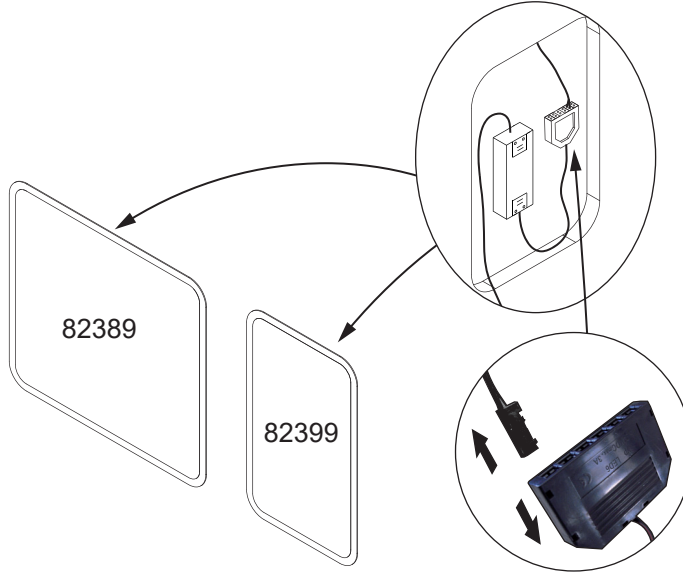


82389:

82399:



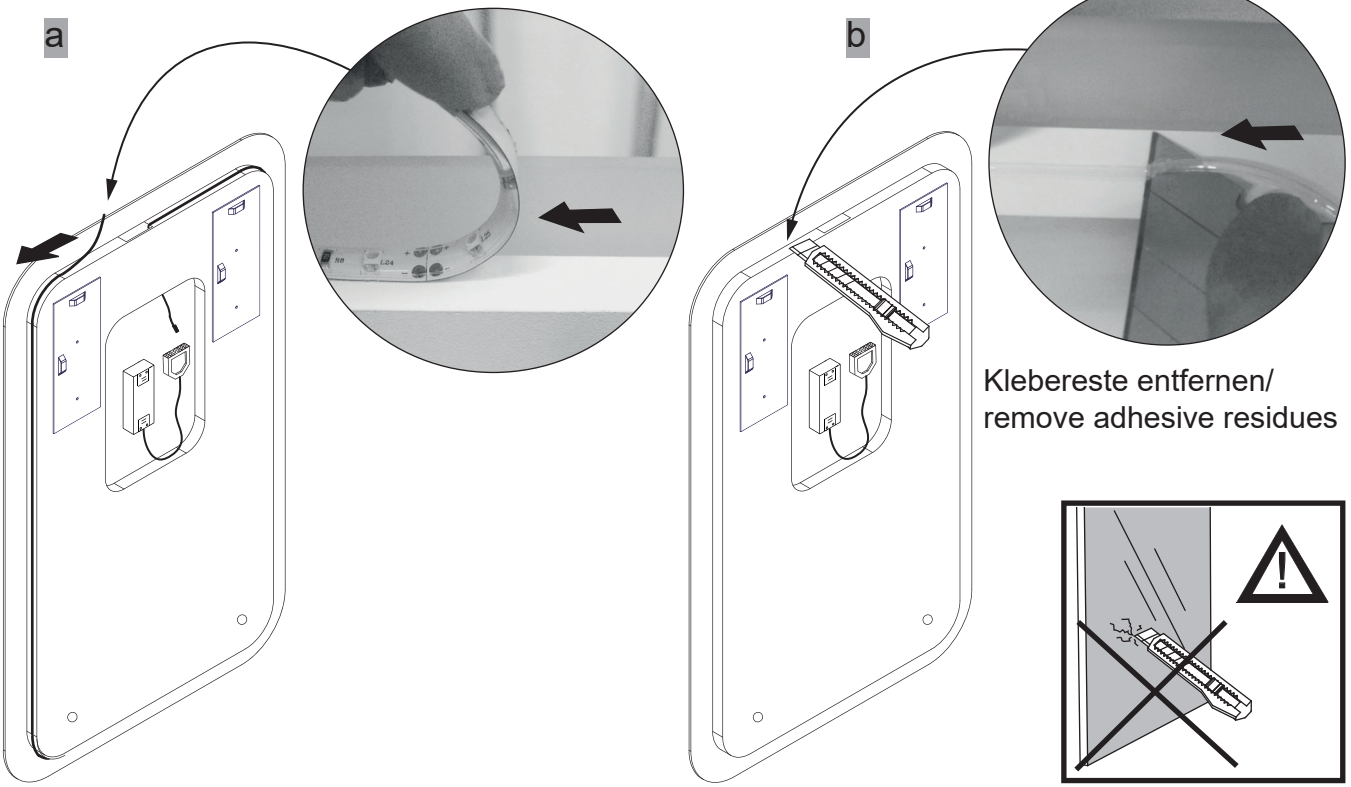
1



2

a

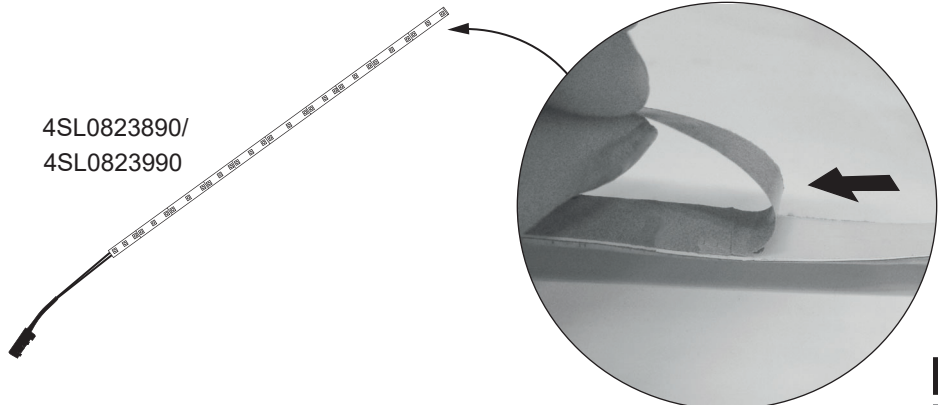
b



Klebereste entfernen/
remove adhesive residues

3

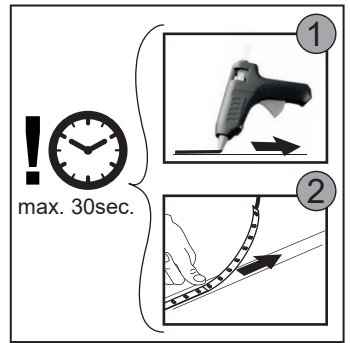
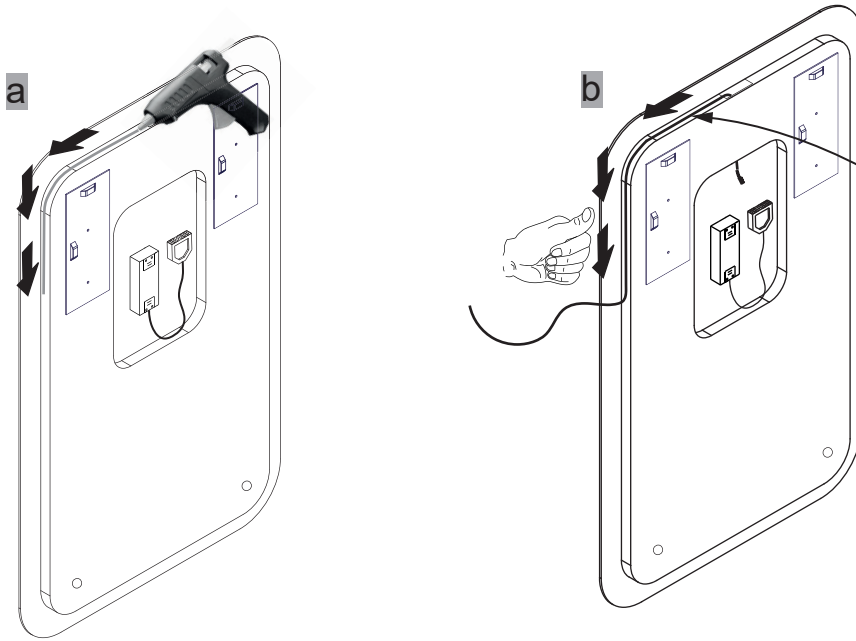
4SL0823890/
4SL0823990



FACKELMANN

5BB0823990 S3 11/22

4 Schritt **a** und **b** **abwechselnd** rundherum durchführen /
 Carry on with step **a** and **b** **alternately** all around



5



Obere Kante des LED-Bandes mit Heißkleber fixieren/
 Fix **upper edge** of LED-stripe with hot glue

6

