

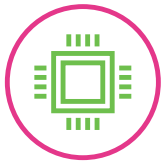
ideapad D330

LAPTOP MEETS TABLET, THE REST IS YOUR STORY.

100% LAPTOP, 100% TABLET.

A powerful Intel® processor in your 2-in-1 computer means you get the best of both worlds – the full performance of a laptop plus the fun of a tablet in one device. Edit photos in one minute, watch movies the next. Go from spreadsheets to gaming in a flash.

WHY YOU SHOULD BUY THE LENOVO IDEAPAD D330



Computer power, tablet fun

Thanks to Intel® Pentium® Silver and Celeron® processing, you have all the computing power you need—and all the fun and mobility of a lightweight tablet. From multitasking to connecting with friends online and streaming shows or movies, everything's a breeze wherever life takes you.



Enjoy life in the fast lane

In today's always-on digital world, it pays to choose a 2-in-1 with 4G LTE. This lightning-quick mobile communication technology delivers a steadier, more stable connection—resulting in faster on-the-go web browsing experience every time.

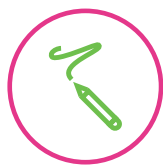


Lenovo™



It's a laptop, a tablet, and more

Fully-fledged laptop or feature-rich tablet? Switch seamlessly between the two by detaching the keyboard. This truly versatile 2-in-1 boasts a convenient trackpad, a Lenovo Active Pen, Dolby Audio™ Premium, and a beautiful 10" screen with up to Full-HD display.

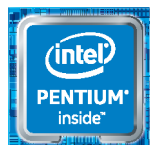


Goodbye notepad, hello Lenovo Active Pen

Now, you can sketch, take notes, write, sign, or doodle away—straight onto the screen. With its pin-point accuracy and pressure-sensitive nib, the Lenovo Active Pen delivers a real pen-on-paper experience. Anytime, anywhere.



WWW.LENOVO.COM



ideapad D330

SPECIFICATIONS

Lenovo IdeaPad D330-10IGM*

PERFORMANCE

Processor

Intel® Pentium® N5000 Processor
Intel® Celeron® N4000 Processor

Operating System

Windows 10 S
Windows 10 Pro
Windows 10 Home

Graphics

Intel® Integrated Graphics

Camera

Front : 2M

Rear : 5M¹

Memory

2 GB/4 GB/8 GB LPDDR4

Storage

32 GB/64 GB/128 GB eMMC

Audio

Dolby Audio™ Premium
Single Microphone, Stereo Speaker

Battery²

Up to 13 Hours

DESIGN

Display

10.1" HD (1280 x 800) Touchscreen
10.1" FHD (1920 x 1200) Touchscreen

Dimensions (W x D x H)

Tablet

(mm) : 249 x 178 x 9.5
(inches) : 9.8" x 7.01" x 0.37"

Dock

(mm) : 249 x 186 x 8.5
(inches) : 9.8" x 7.32" x 0.33"

Weight

Tablet (WiFi SKU)

Starting at 1.32 lbs (600 g)

Tablet (LTE SKU)

Starting at 1.34 lbs (610 g)

Dock

Starting at 1.18 lbs (535 g)

Unique Features

LTE¹

Lenovo Active Pen 2 Ready
Tablet Inverted Plugged-in

Colors

Mineral Gray
Bronze

CONNECTIVITY

WLAN

1 x 1 WiFi 802.11 ac
2 x 2 WiFi 802.11 ac

Bluetooth®

Bluetooth® 4.2

Connectors

1 x USB 3.1 Type-C™³
2 x USB 2.0 Type-A (on dock)
microSD™
Nano SIM
Combo Audio

PRELOADED SOFTWARE

Lenovo PC Manager⁴
Garantia Estendida⁵
Lenovo App Explorer⁶
McAfee LiveSafe™⁶
Tangram⁶
LinkedIn⁷
Microsoft Office Centennial⁷
Microsoft Office Centennial JP SKU⁸
Microsoft Office Mobile⁷
Lenovo Antivirus Plus⁴
Windows 10 Mobile Broadband⁴

¹ Optional.

² All battery life claims are approximate and based on test results using the MobileMark® 2014 ver 1.5 battery life benchmark test. Actual results will vary, and depend on numerous factors including product configuration and usage, software, operating conditions, wireless functionality, power management settings, screen brightness and other factors. The maximum capacity of the battery will naturally decrease with time and usage. See <https://bapccom/products/mobilemark-2014/> for additional details.

³ PD as optional.

⁴ China only.

⁵ For BR service.

⁶ ROW.

⁷ Worldwide (WW).

⁸ Japan only.



LENOVO SERVICES

Warranty Upgrades - On-site / In-Home Service

Maximizes PC uptime and productivity by providing convenient, fast repair services in your own home.

Accidental Damage Protection

Avoid the hassles of unexpected repair costs. Provides coverage for non-warranted damage incurred under normal operating conditions, such as minor spills, drops or damage to the integrated screen.

Warranty Extensions (1-to-3 Years Total Duration)

This fixed-term, fixed-cost service helps accurately budget for PC expenses, protect your valuable investment and potentially lower the cost of ownership over time.

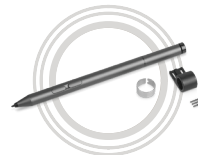
* Example of Lenovo IdeaPad catalogue naming convention



Intel® platform codes

Apollo Lake: IAP, Broadwell: IBD, Braswell: IBR, Broadwell: IBW, Baytrail: IBY, Cannonlake: ICN, Haswell: IHH, Kabylake: IKB, Skylake H: ISH, Skylake: ISK, Skylake U: ISU, Skylake Y: ISY, Skylake Z: ISZ, Gemini Lake: IGM

OPTIONS & ACCESSORIES



Lenovo Active Pen 2



USB-C SSD
256 GB/512 GB/1 TB



Lenovo Ultra Slim Sleeve



WWW.LENOVO.COM

Lenovo reserves the right to alter product offerings and specifications at any time, without notice. Lenovo makes every effort to ensure accuracy of all information but is not liable or responsible for any editorial, photographic or typographic errors. All images are for illustration purposes only. For full Lenovo product, service and warranty specifications visit www.lenovo.com. Lenovo makes no representations or warranties regarding third party products or services. **Trademarks:** The following are trademarks or registered trademarks of Lenovo: Lenovo, the Lenovo logo, IdeaPad, IdeaCentre, yoga and yoga home. Microsoft, Windows and Vista are registered trademarks of Microsoft Corporation. Ultrabook, Celeron, Celeron Inside, Core Inside, Intel, Intel Logo, Intel Atom, Intel Atom Inside, Intel Core, Intel Inside, Intel Inside Logo, Intel vPro, Itanium, Itanium Inside, Pentium, Pentium Inside, vPro Inside, Xeon, Xeon Phi, and Xeon Inside are trademarks of Intel Corporation in the U.S. and/or other countries. Other company, product and service names may be trademarks or service marks of others. Visit www.lenovo.com/lenovo/us/en/safecom/ periodically for the latest information on safe and effective computing. ©2018 Lenovo. All rights reserved.



Lenovo™

ideapad D330-10IGM 81H300BAGE

Product

ideapad D330-10IGM

Region

WE

Country/Region

Germany

Machine Type

81H3

Processor

Intel Pentium Silver N5000 (4C / 4T, 1.1 / 2.7GHz, 4MB)

Graphics

Integrated Intel UHD Graphics 605

Chipset

Intel SoC Platform

Memory

4GB Soldered LPDDR4-2133

Display

10.1" FHD (1920x1200) IPS 300nits Anti-glare

Multi-touch

10-point Multi-touch

Storage

128GB eMMC

Optane Memory

None

Optical

None

Media Reader

MicroSD Reader

Ethernet

None

WLAN + Bluetooth

11ac, 2x2 + BT4.2

WWAN

None

Bundled Accessories

None

Color

Mineral Grey

Camera

Front 2.0MP / Rear 5.0MP

Microphone

Mono

Keyboard Docking

Keyboard Dock (Pogo Pin, Detachable)

Keyboard

Non-backlit, German

Pen

None

Fingerprint Reader

None

NFC

None

TPM

None

Battery

Integrated 39Wh

Power Adapter

45W USB-C

Operating System

Windows 10 Home in S mode, German

Bundled Software

Office 365 Personal

Base Warranty

2-year, Depot

Bundled Service

None

EAN / UPC

193386601487

End of Support

2025-04-26

Announce Date

2019-03-26

Notes:

Battery life is an estimated maximum. Actual battery life may vary based on many factors, including screen brightness, active applications, features, power management settings, battery age and conditioning, and other customer preferences.

 WWW.LENOVO.COM

Lenovo may not offer the products, services or features discussed in this document in other countries. Lenovo may withdraw an offering at any time. Information is subject to change without notice. Consult your local representative for information on offerings available in your area.

Lenovo reserves the right to change specifications or other product information without notice. Lenovo is not responsible for photographic or typographical errors.

Lenovo provides this publication "as is" without warranty of any kind, either express or implied, including the implied warranties of merchantability or fitness for a particular purpose.



<https://psref.lenovo.com>

Visit psref website for the latest version of Product Specifications Reference.

© Lenovo, 2019. All rights reserved.



Lenovo

ideapad D330-10IGM Platform Specifications

Product Specifications Reference (PSREF)

Processor	Intel® Celeron® Processor or Intel Pentium® Silver Processor								Dimensions	Pad: WxDxH: 9.8" x 7.01" x 0.37"; 249mm x 178mm x 9.5mm Keyboard dock: WxDxH: 9.8" x 7.32" x 0.33"; 249mm x 186mm x 8.5mm	
	Processor Number	# of Cores	# of Threads	Base Frequency	Burst Frequency	Cache	Memory Type	Processor Graphics	Weight	Pad: 1.32lb / 600g (WiFi model); 1.34lb / 610g (LTE model) Keyboard dock: 1.18lb / 535g	
	Celeron N4000	2	2	1.1 GHz	2.6 GHz	4MB	LPDDR4-2133	Intel UHD Graphics 600	Case color	Bronze or mineral grey	
	Pentium Silver N5000	4	4	1.1 GHz	2.7 GHz			Intel UHD Graphics 605	Case material	PC/ABS + GF (25%~40%)	
Graphics	Intel UHD Graphics 600 or 605 in processor only									Media reader	One Micro SD Card slot (up to 128GB), single Nano-SIM Card slot (LTE model only)
Chipset	Intel SoC (System on Chip) platform									Ports	USB 2.0 x 2 (on keyboard dock), USB 3.1 Type C Gen x 1 / optional power delivery, media reader, headphone / microphone combo jack, DC-in <i>* Depending on many factors, actual data transfer speed may be lower than theoretical speed</i>
Memory	8GB max / 2133MHz LPDDR4, soldered to systemboard										
Display	<i>Some:</i> 10.1" (256mm) HD (1280x800) color, IPS, anti-glare, LED backlight, 300 nits, 16:10 aspect ratio <i>Some:</i> 10.1" (256mm) FHD (1920x1200) color, IPS, anti-glare, LED backlight, 300 nits, 16:10 aspect ratio										
Multi-touch	Multi-touch, support 10 fingers									Camera	<i>Front camera:</i> 2MP resolution, fixed focus <i>Optional rear camera:</i> 5MP resolution, auto focus
Keyboard dock	<i>Optional:</i> Dock with non-backlit keyboard									Audio support	HD Audio, stereo speakers with Dolby® Audio Premium, 1.0W x 2 / mono microphone, headphone / microphone combo jack
Active pen	<i>Optional:</i> Lenovo® Active Pen, replaceable battery									Touchpad	One-piece multi-touch touchpad
Storage	32GB, 64GB or 128GB eMMC flash memory on board									Security chip	<i>Optional:</i> Discrete TPM 2.0, TCG Certified
Optical	None									Fingerprint reader	None
Ethernet	None									Battery type	Integrated Li-ion 39Wh battery
WLAN	<i>One of the following, configurable by model:</i> • 11ac, 1x1, Wi-Fi + Bluetooth combo adapter, M.2 Card • 11ac, 2x2, Wi-Fi + Bluetooth combo adapter, M.2 Card <i>WWAN (optional) One of the following, configurable by model:</i> • Fibocom L830-EB • Fibocom L850-GL									Battery life	<i>MobileMark® 2014:</i> 13 hrs <i>* Battery life varies significantly with settings, usage, & other factors</i>
										AC adapter	45W Round Tip AC adapter or USB Type-C AC adapter
										Preload	Windows® 10 Home 64, Windows 10 Pro 64 or Windows 10 Home in S mode
Bluetooth™	Bluetooth 4.2 wireless, integrated in Wi-Fi + Bluetooth combo adapter									Limited warranty	<i>One of the following, configurable by model:</i> • 1-year limited depot repair service • 2-year/1-yr battery depot repair service
Sensor	Accelerometer, Hall sensor, GPS (LTE model only)									Environment	ENERGY STAR® 7.0; ErP Lot 3; RoHS-compliant

Lenovo

Lenovo
March 2019

ideapad D330-10IGM

Lenovo™

