



D Montageanleitung

F Notice de montage

NL Handleiding voor de montage

CZ Monzážní návod

HU Szerelési útmutató

TR Montaj talimatı

GB Assembly instructions

I Istruzione di montaggio

PL Instrukcja montaży

SK Návod na montáž

RO Instrucțiuni de montaj

RU ИНСТРУКЦИЯ ПО МОНТАЖУ

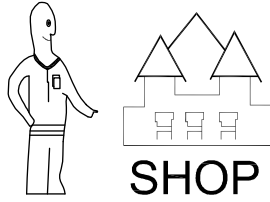
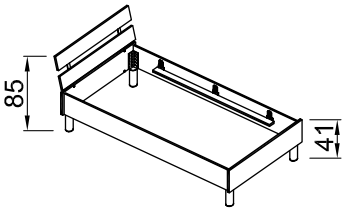
Art. Nr.

3700.62

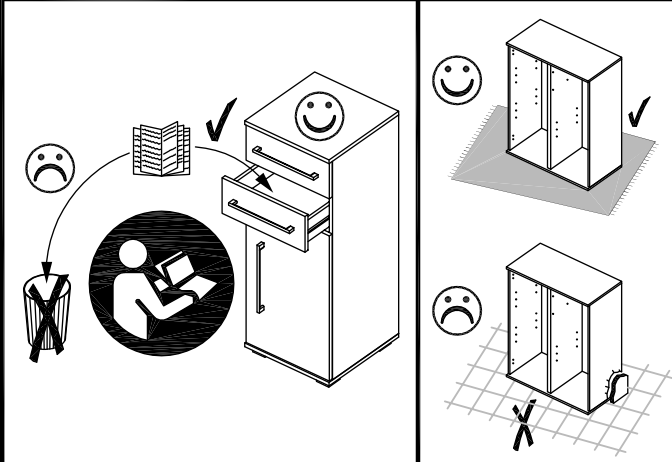
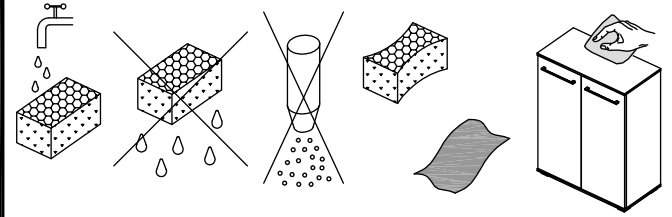
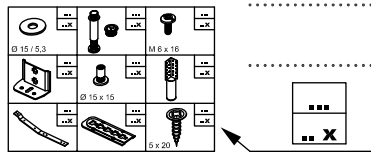
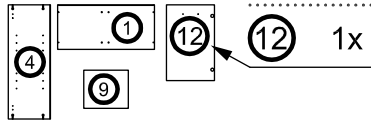
3708.62

90 x 190 cm

120 x 220 cm



Art. Nr. 3700.62



	99 4x
Ø 18 / 6,4	
	123 6x
	124 12x
4 x 17	
	563 4x
M 6 x 20	
	564 2x
	565 4x
	566 4x
Ø 15 x 15	
	632 88x
5 x 17	

