



D Montageanleitung

F Notice de montage

NL Handleiding voor de montage

CZ Monzážní návod

HU Szerelési útmutató

TR Montaj talimatı

GB Assembly instructions

I Istruzione di montaggio

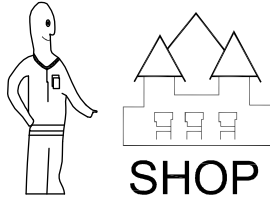
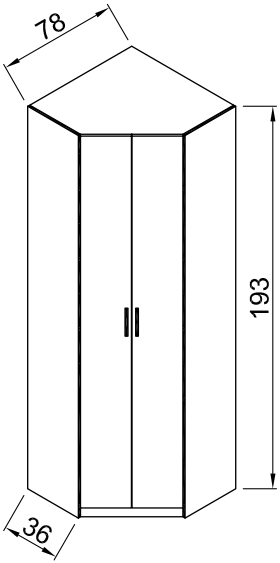
PL Instrukcja montaży

SK Návod na montáž

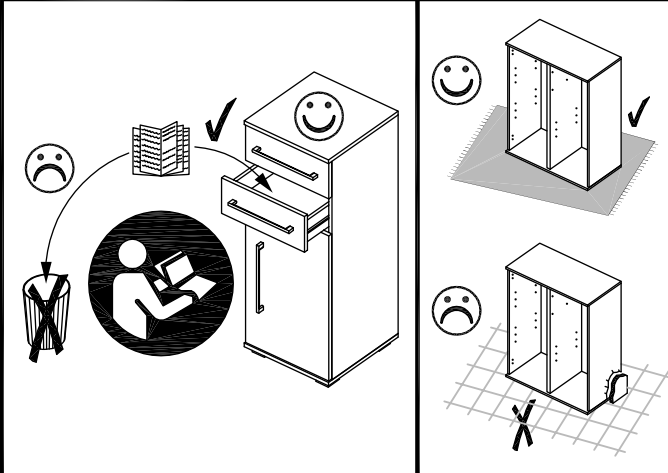
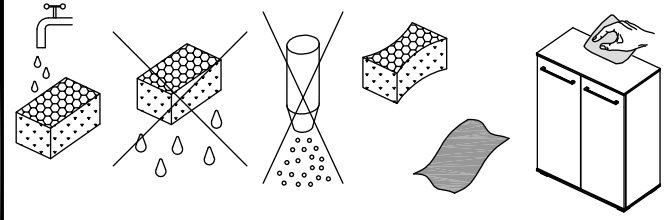
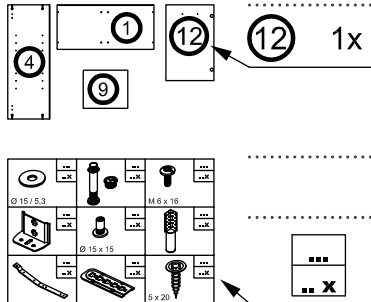
RO Instrucțiuni de montaj

RU ИНСТРУКЦИЯ ПО МОНТАЖУ

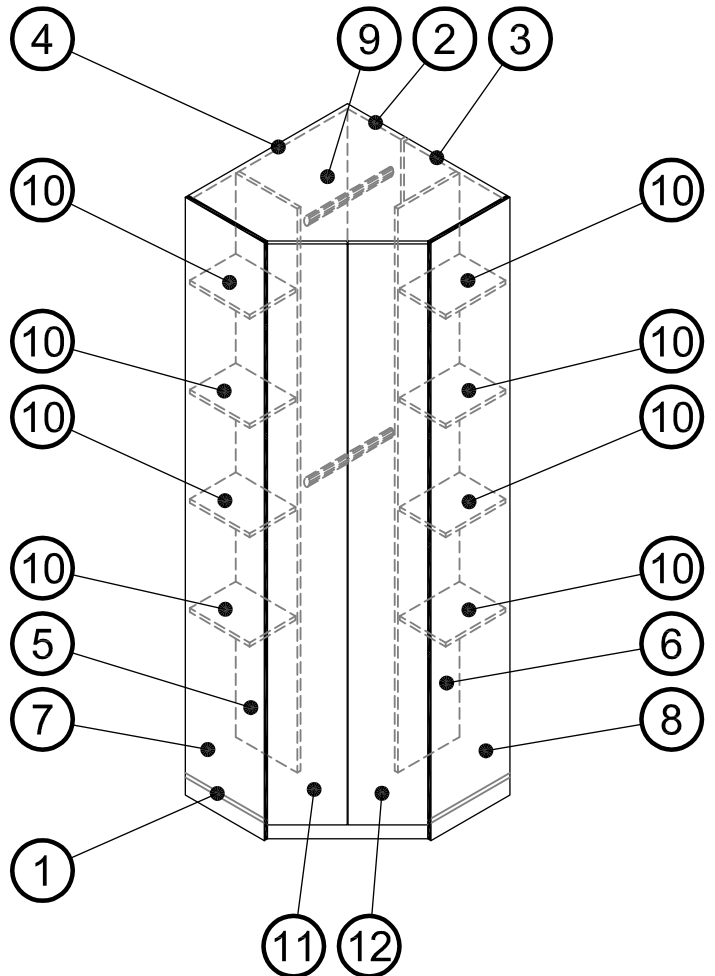
Art. Nr. 1040

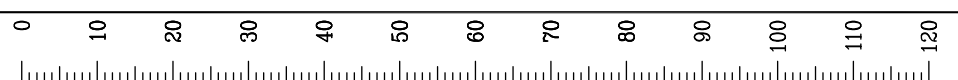
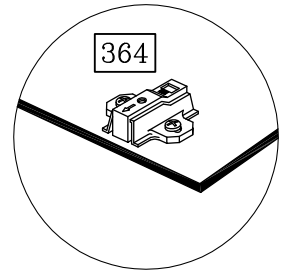
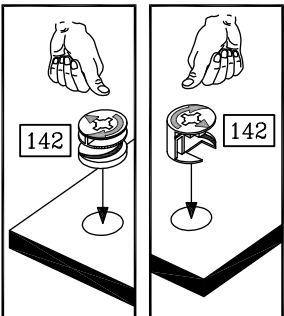
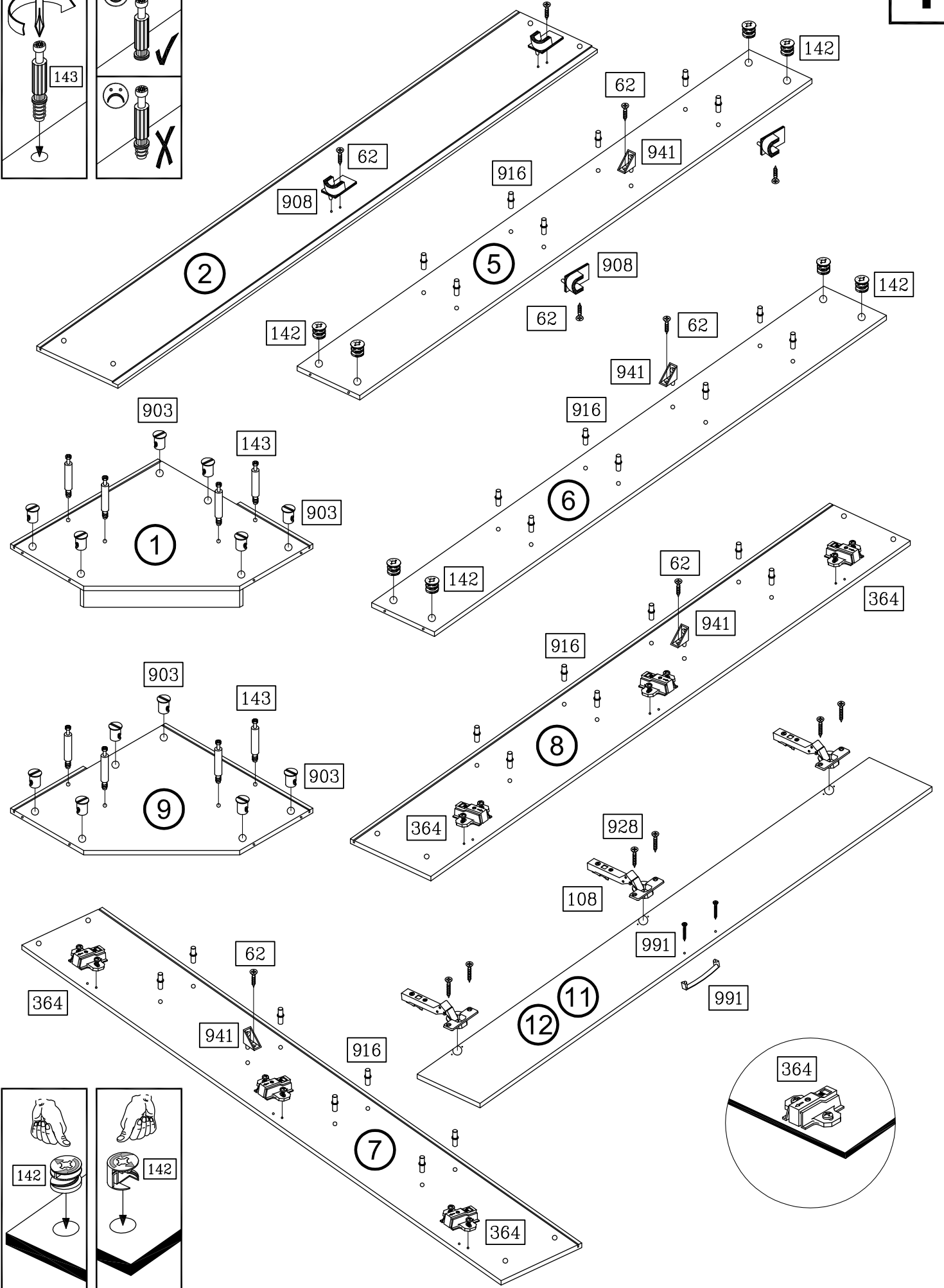
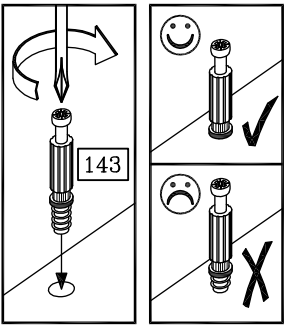


Art. Nr. 1040

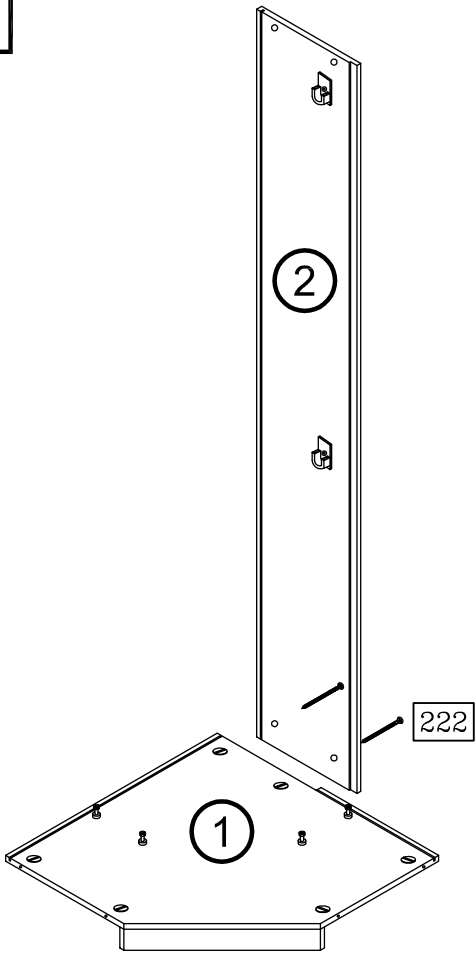


62 12x	72 7x	108 6x
3,5 x 13	4x13	
142 8x	143 8x	222 12x
Ø 15 x 11,5	6 x 44	4,5 x 55
296 2x	364 6x	903 12x
521 mm		
905 12x	908 4x	916 28x
Ø 12 / 2,5		
921 8x	927 8x	928 12x
	6,3 x 11	4 x 15
941 4x	991 2x	

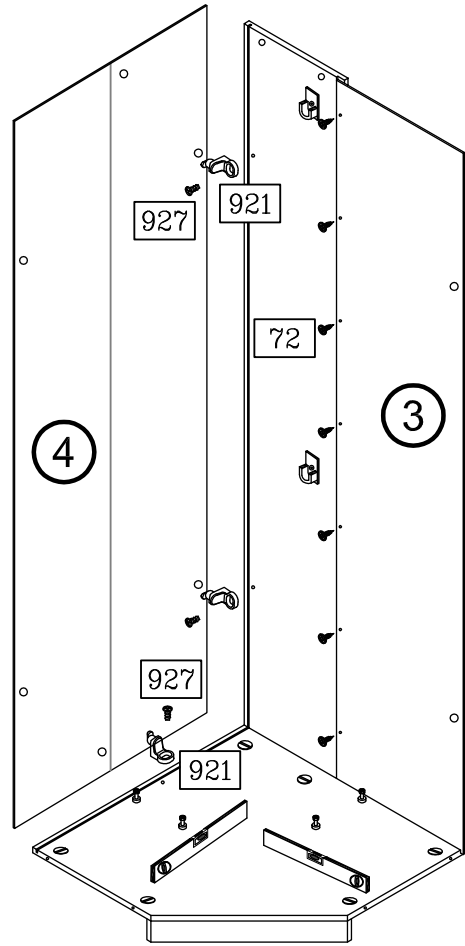




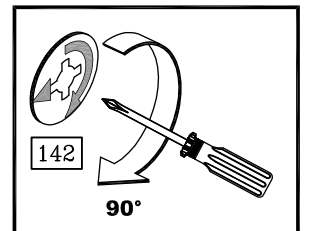
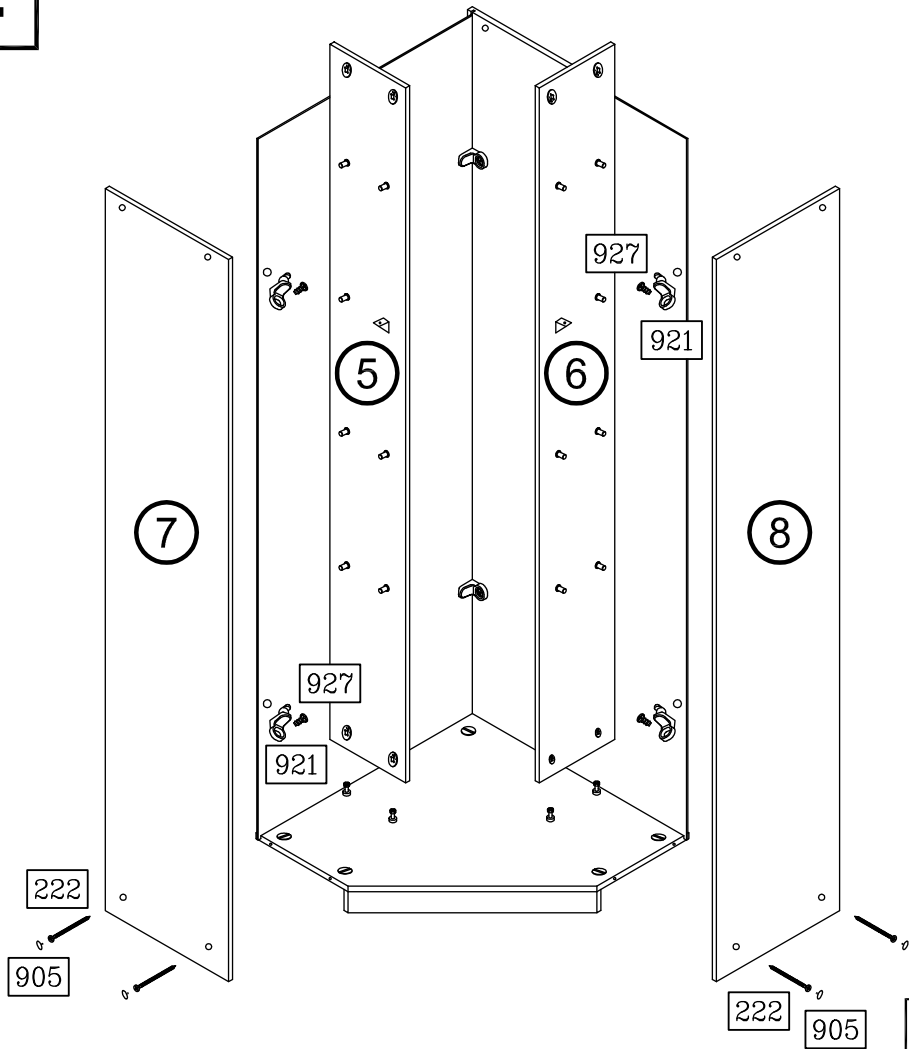
2



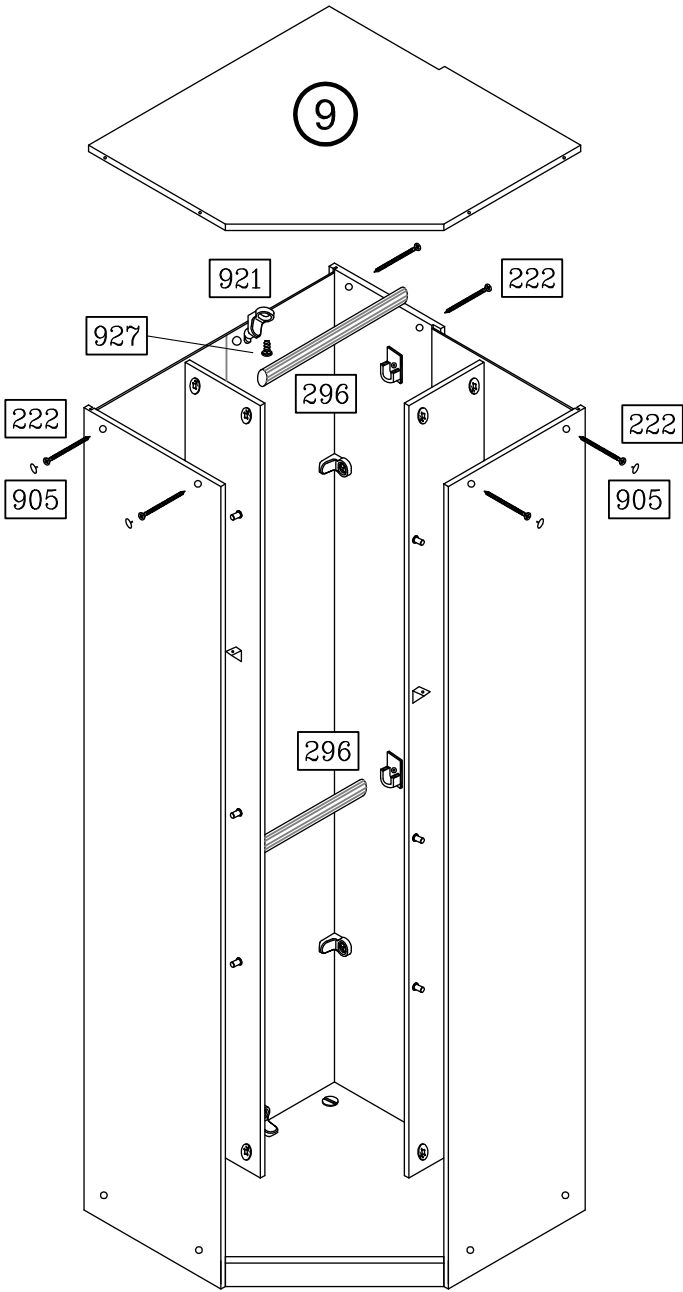
3



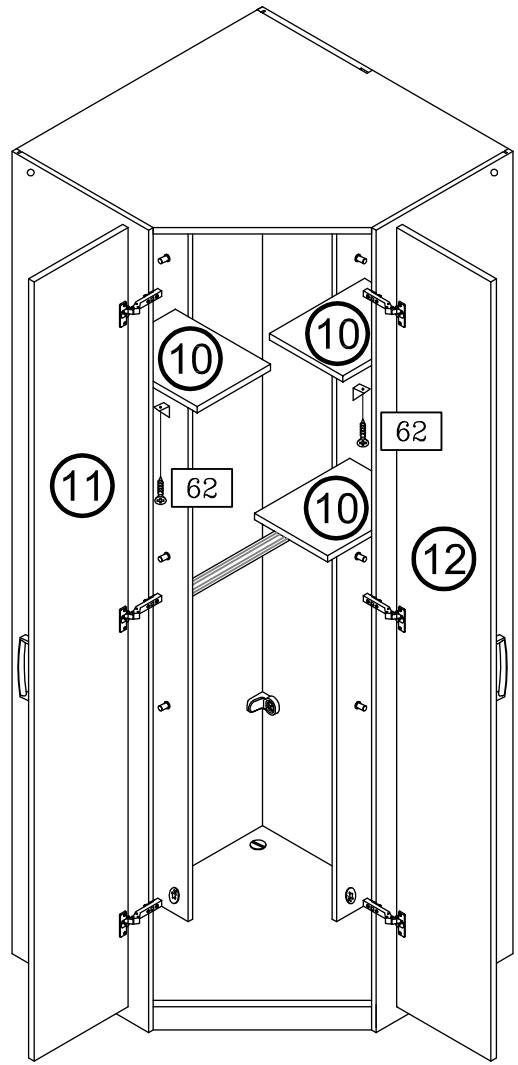
4



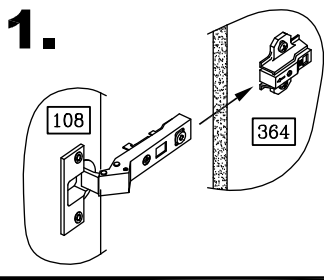
5



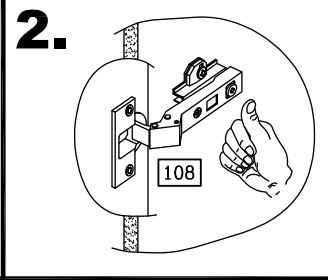
6



1.



2.



7

