



D Montageanleitung

F Notice de montage

NL Handleiding voor de montage

CZ Monzážní návod

HU Szerelési útmutató

TR Montaj talimatı

GB Assembly instructions

I Istruzione di montaggio

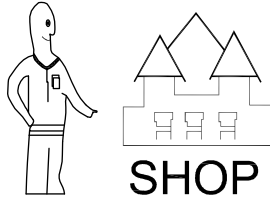
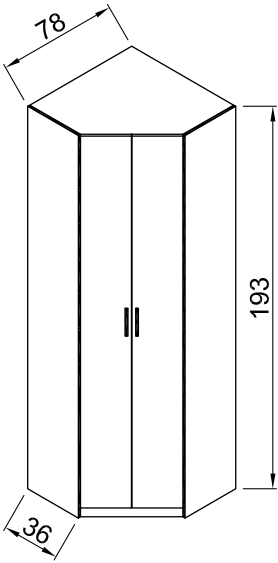
PL Instrukcja montaży

SK Návod na montáž

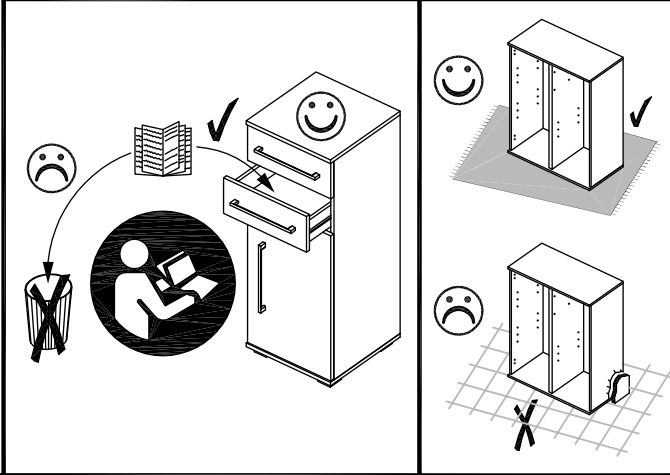
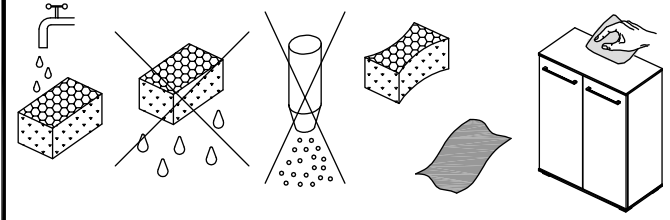
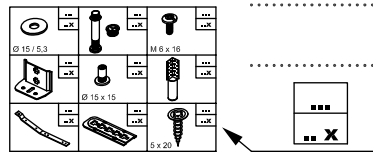
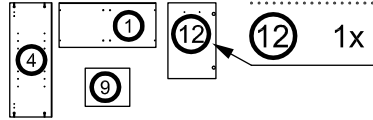
RO Instrucțiuni de montaj

RU ИНСТРУКЦИЯ ПО МОНТАЖУ

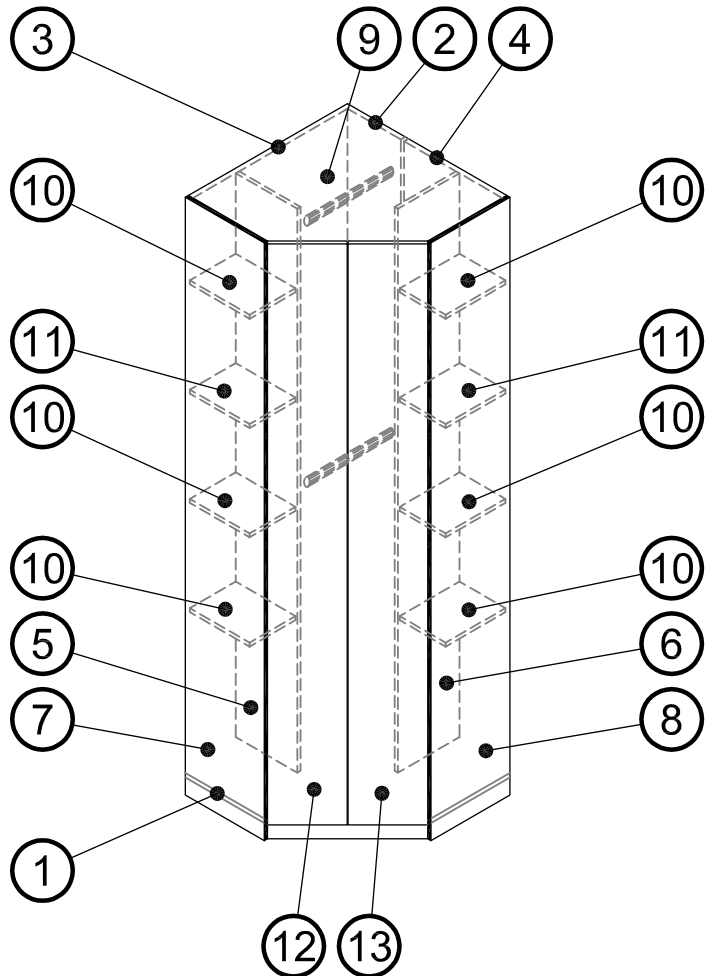
Art. Nr. 1040

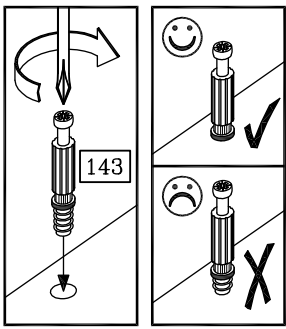


Art. Nr. 1040



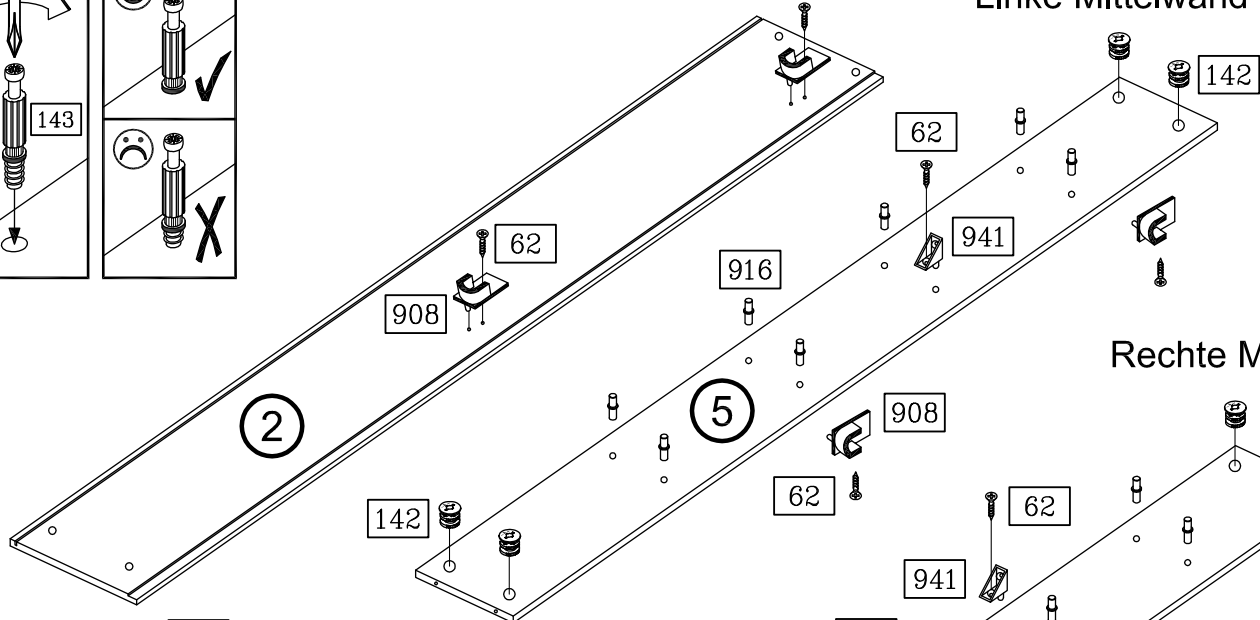
	62 12x		72 7x		108 6x
3,5 x 13		4x13			
	142 8x		143 8x		222 12x
Ø 15 x 11,5		6 x 44		4,5 x 55	
	296 2x		364 6x		903 12x
521 mm					
	905 12x		908 4x		916 28x
Ø 12 / 2,5					
	921 8x		927 8x		928 12x
		6,3 x 11		4 x 15	
	941 4x		991 2x		



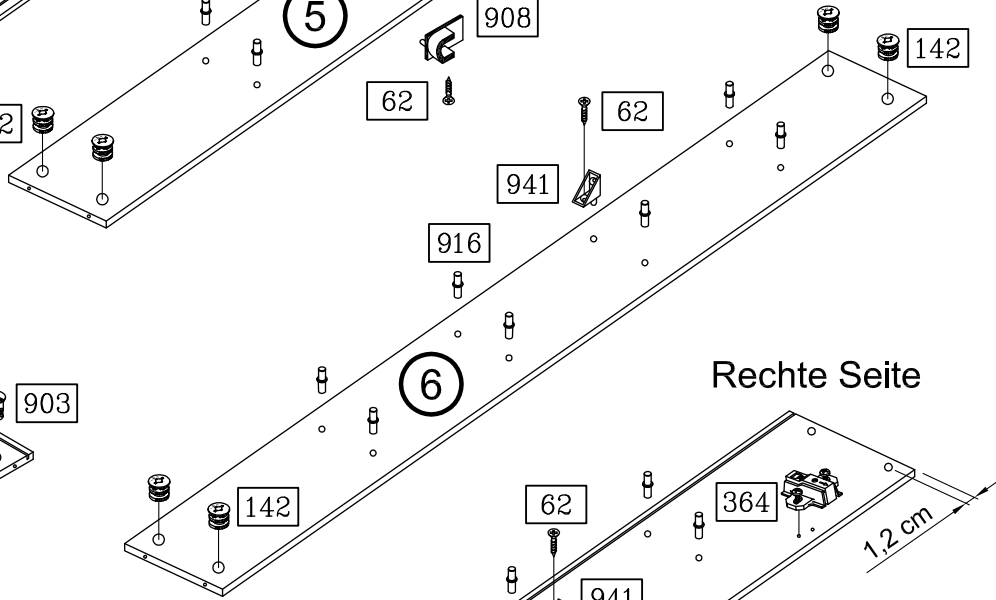


Rückwand

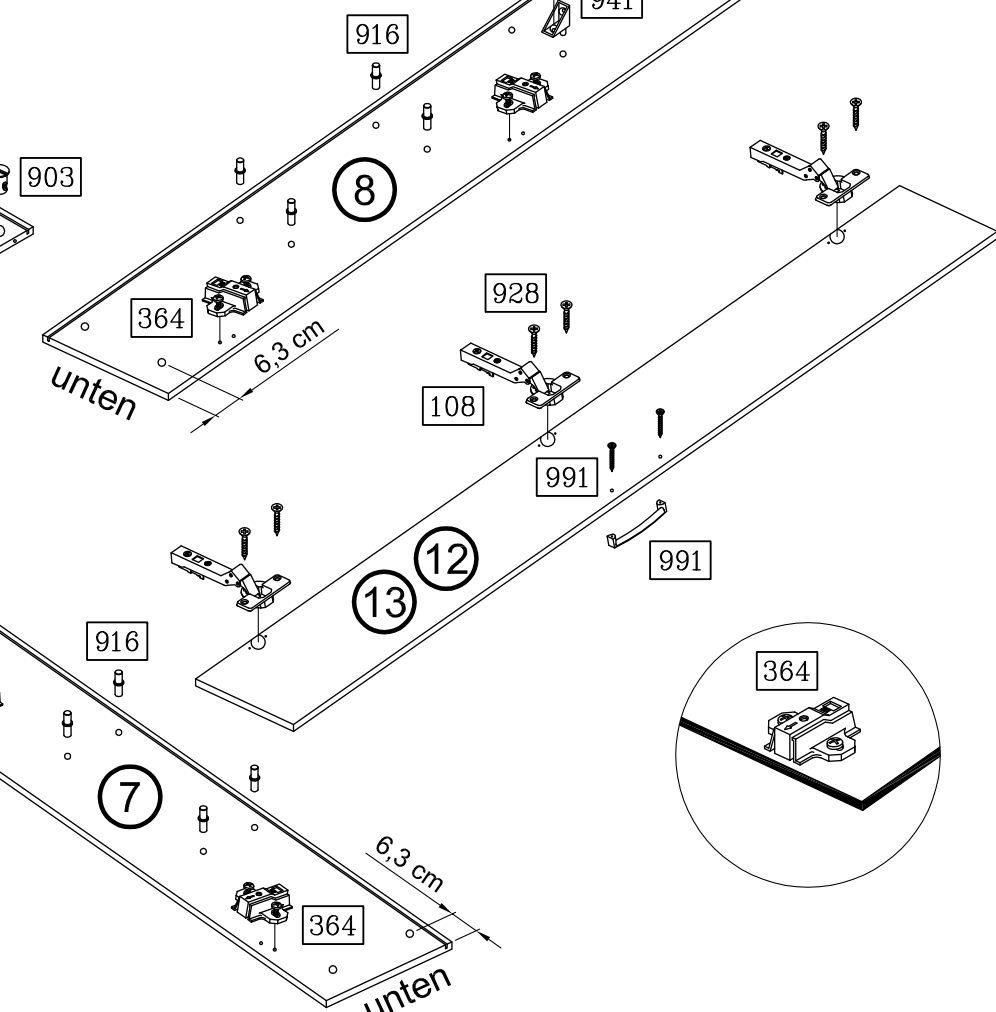
Linke Mittelwand



Rechte Mittelwand

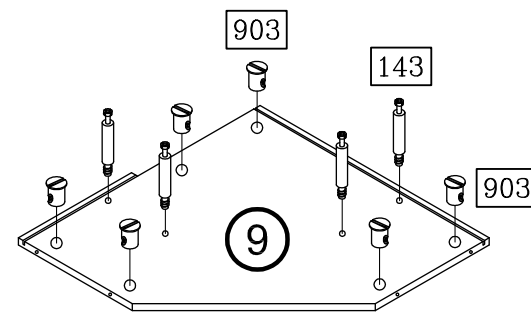
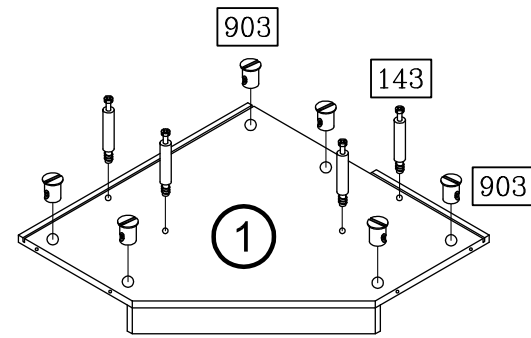


Rechte Seite

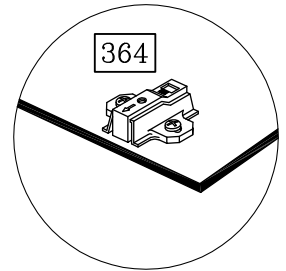
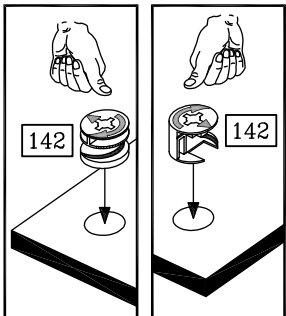
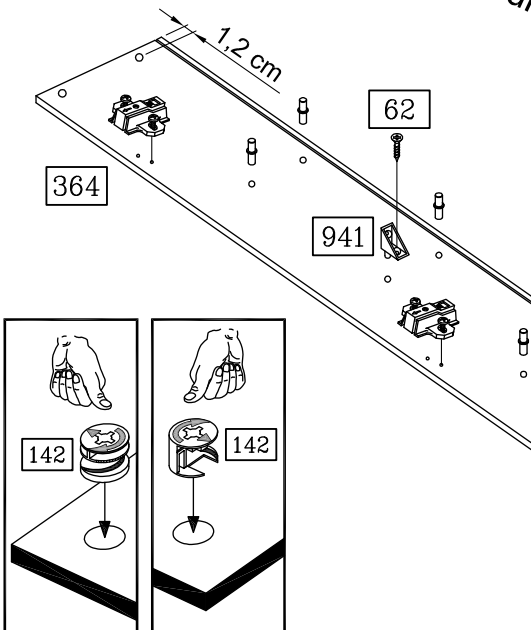


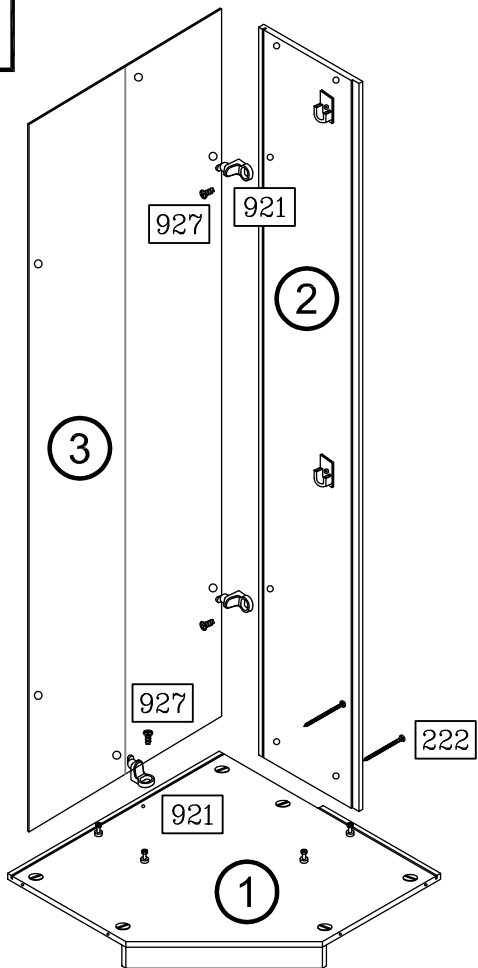
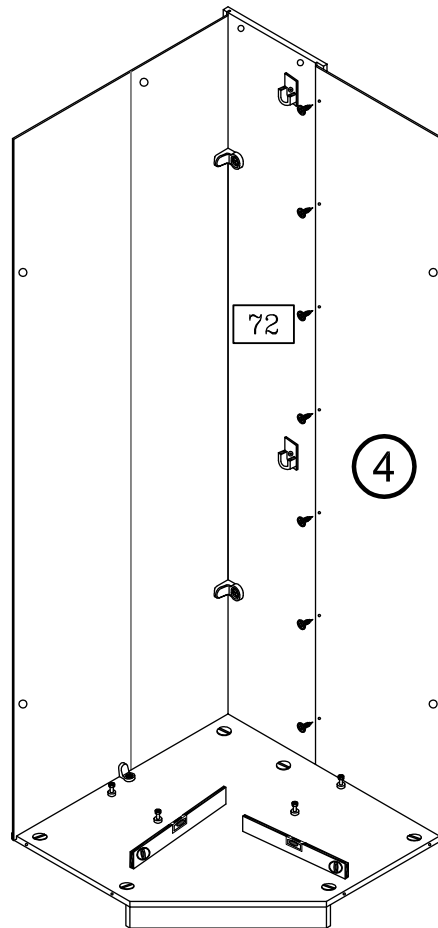
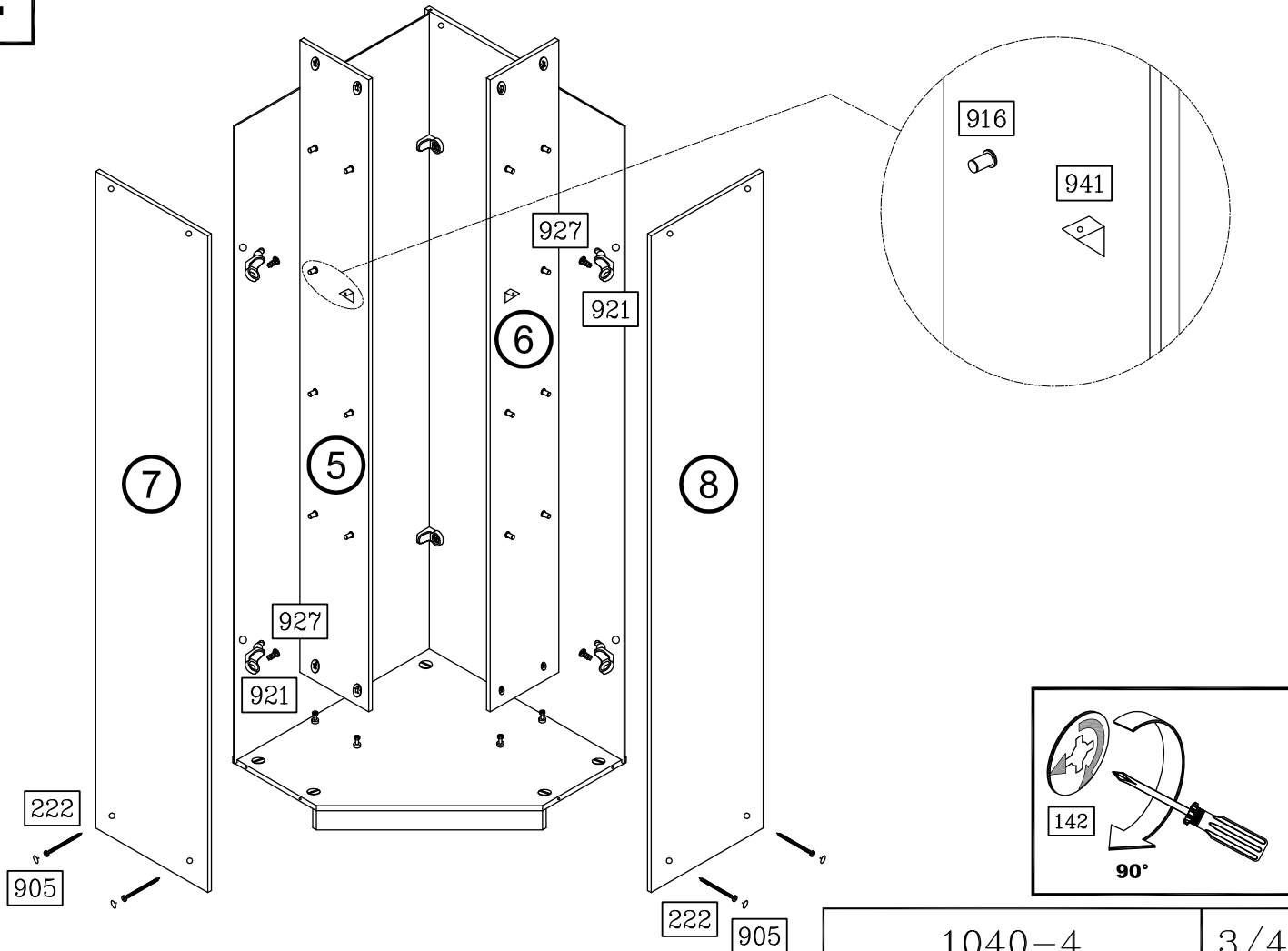
unten

unten



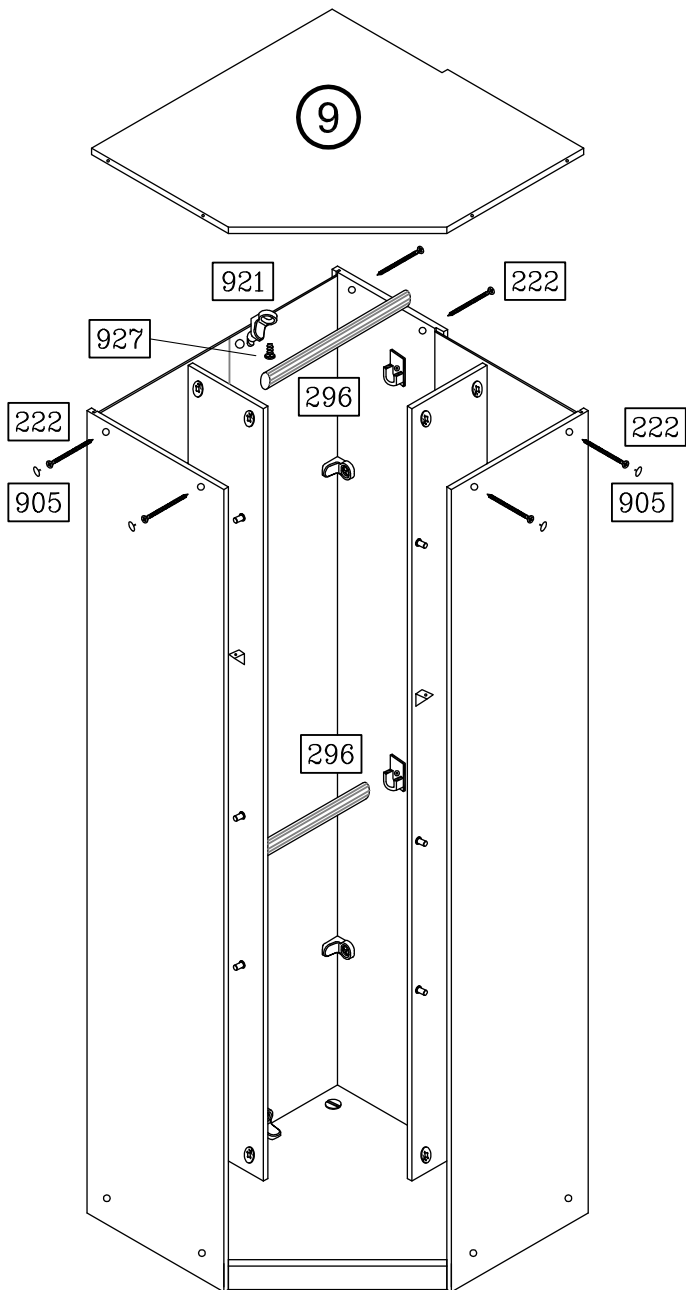
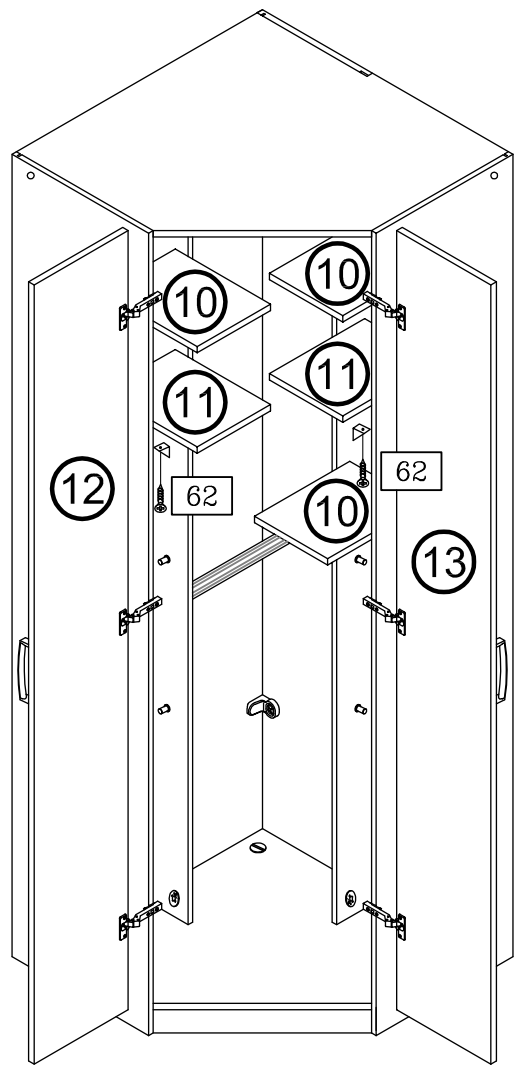
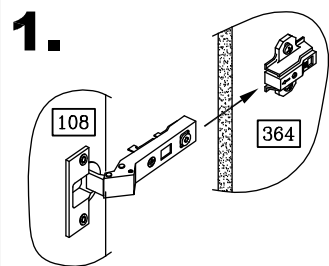
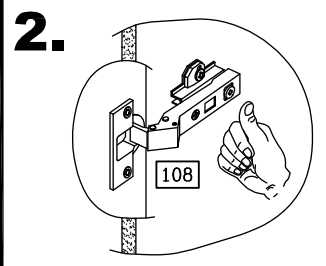
Linke Seite



2**3****4**

1040-4

3/4

5**6****1.****2.****7**