

Bohrlochhöhen für Schraubhaken

Achtung: Die Montage muß durch fachkundige Personen erfolgen. Der Untergrund zur Wandbefestigung ist vor Montage zu prüfen. Bitte wählen Sie entsprechend das geeignete Befestigungsmaterial. Fehlerhafte Montagen können das Möbel beschädigen oder dessen Funktion dauerhaft beeinträchtigen. Für Sach- Und Personenschäden übernehmen wir im Falle einer unsachgemäßen Montage keine Haftung.

Let op: De montage moet door vakkundige personen worden uitgevoerd. De ondergrond voor bevestiging moet voor de montage worden gecontroleerd. Kies voor geschikt montage materiaal. Een onjuiste montage kan het meubel beschadigen of het functioneren blijvend belemmeren. Voor materiële schade of persoonlijk letsel zijn wij ingeval van een onjuiste montage niet aansprakelijk.

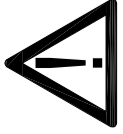
Boorgaathogtes voor schroefhaak

Attention: Assembly must be carried out by skilled personnel. The subsurface for the wall mounting must be checked before assembly. Please select a suitable mounting material. Faulty assembly can damage furniture or permanently impair its function. We will not be held responsible for damage to material or persons in the case of improper assembly.

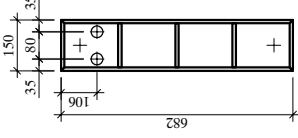
Drilling points for screw hooks

Hauteur d'alésages pour crochet à vis

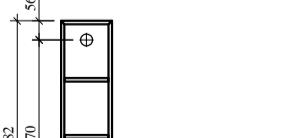
Attention: Le montage doit être effectué par des personnes compétentes. Il convient de vérifier la surface pour la fixation murale avant le montage. Veuillez choisir le bon matériel pour la fixation. Les montages défectueux peuvent endommager le meuble ou en affecter sa fonction de manière durable. Nous déclinons toute responsabilité en cas de dommages corporels ou aux biens en cas de montage non conforme.



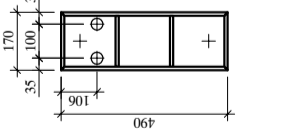
REB15



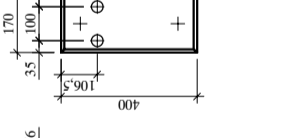
REA15 / REB15



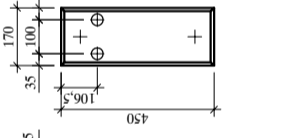
REA17



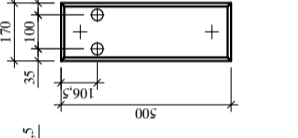
SRA4



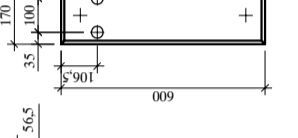
SRA45 / SRB45



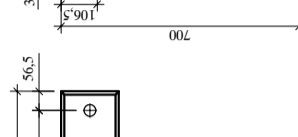
SRA5



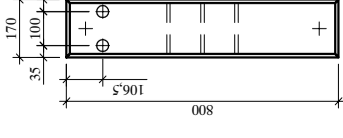
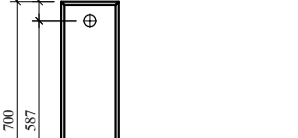
SRB6



SRA6 / SRB6



SRA7



SRA8-35 /
SRB8-35
SRA8
SRA8-44
SRA8-53 /
SRB8-53



SRA9
SRA9-36 /
SRB9-36
SRA9-4545 /
SRB9-4545



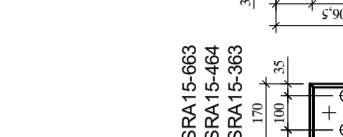
SRA10-55
SRA10-46
SRA10-64



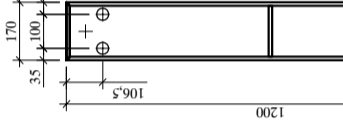
SRA12-66 /
SRB12-66



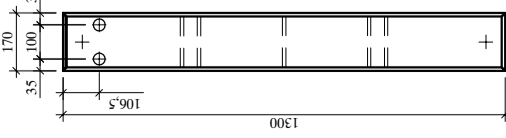
SRA15-663
SRA15-464
SRA15-363



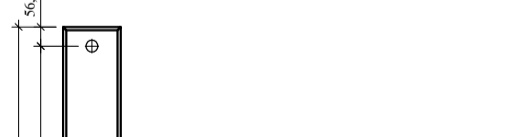
SRA16-646
SRA16-88



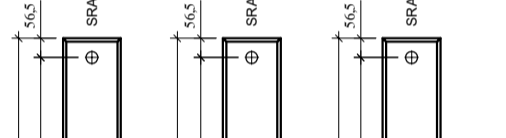
SRA17-737



SRA13-6565
SRA13-454
SRA13-363



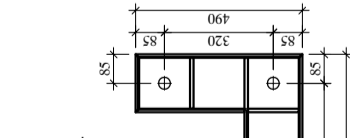
SRA14-545
SRA14-68
SRA14-77



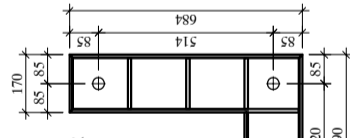
SRA14-545
SRA14-68
SRA14-77



SRLAL



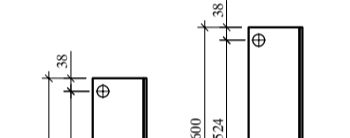
SRLAL



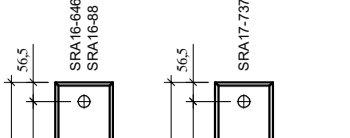
SRLAR



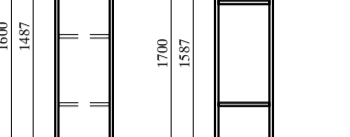
SRLAR



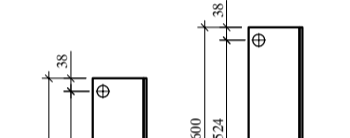
SRP45
SRP6



SRA15-663
SRA15-464
SRA15-363

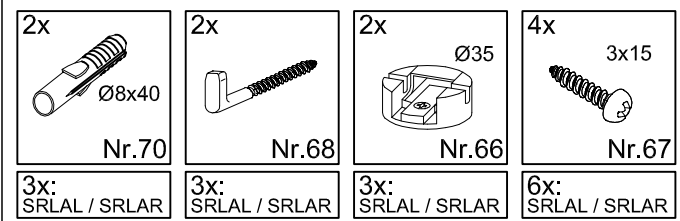
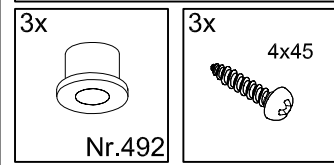


SRA16-646
SRA16-88

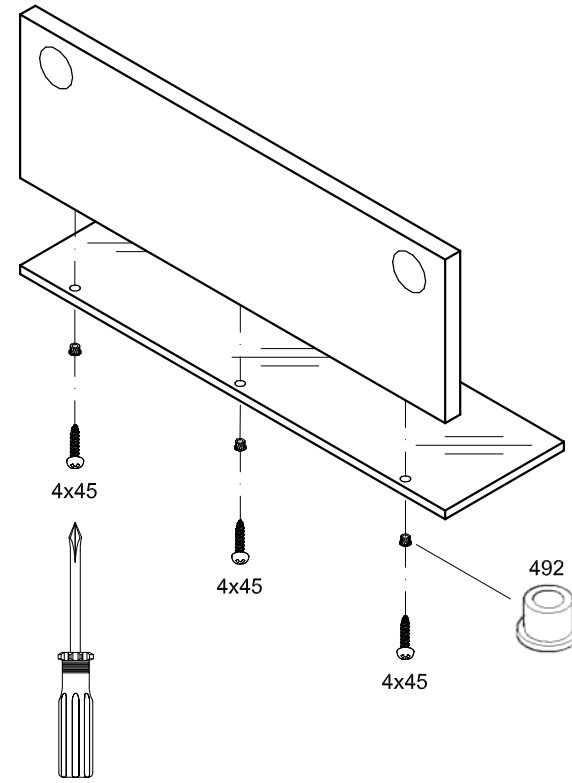


SRA17-737

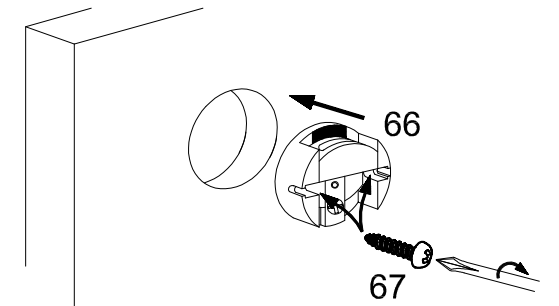
SRP45 / SRP6



→ 1.

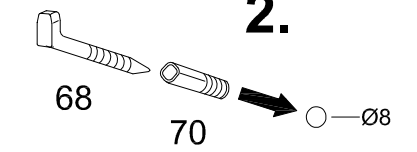


1.



3.

2.



4.

