



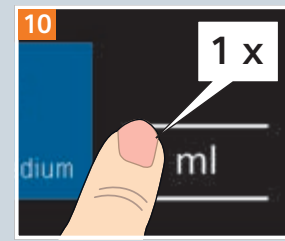
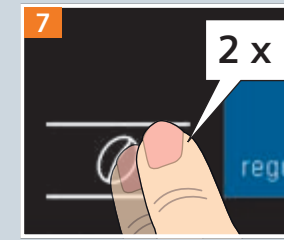
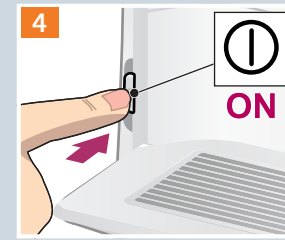
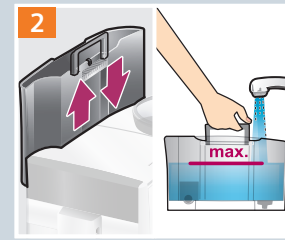
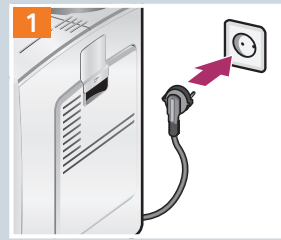
TE 65..

siemens-home.bsh-group.com/welcome

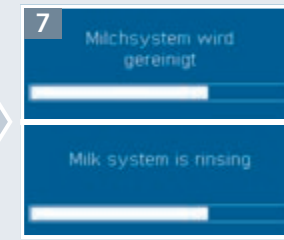
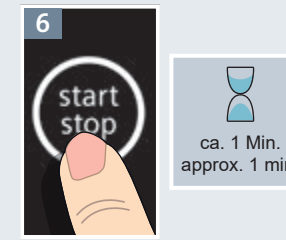
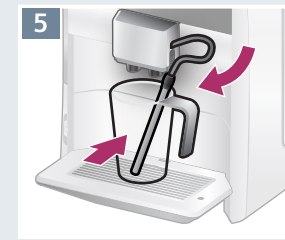
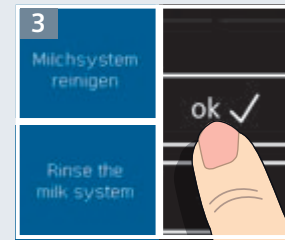
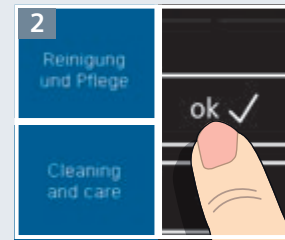
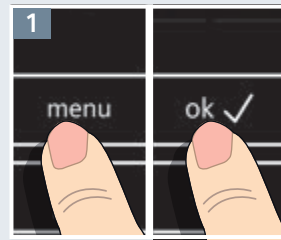
de Kurzanleitung
en Quick reference guide

Beispiel Zubereitung
Latte Macchiato
sehr stark/groß

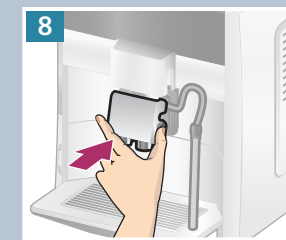
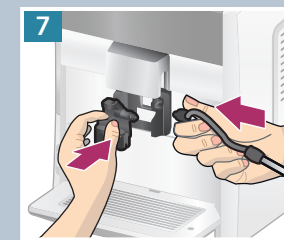
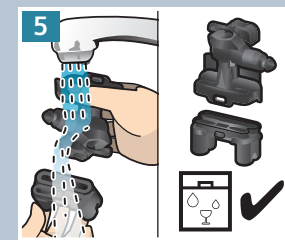
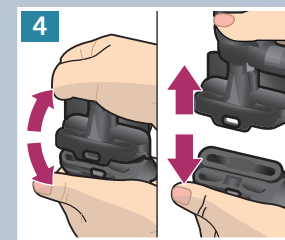
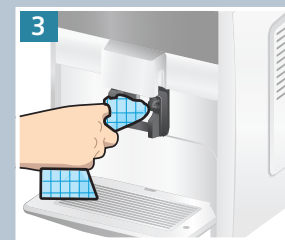
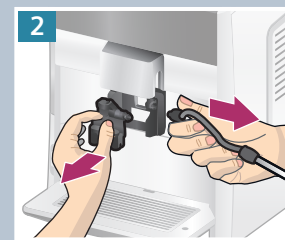
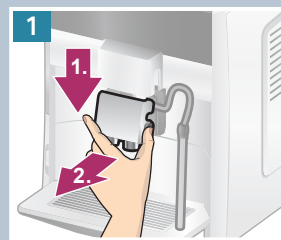
Sample Preparation
Latte Macchiato
very strong/large



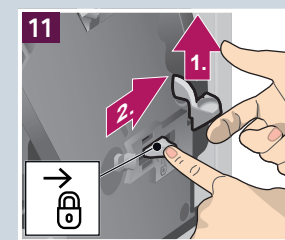
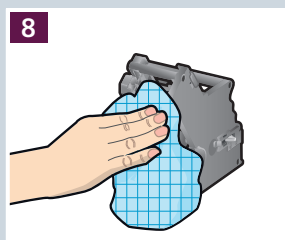
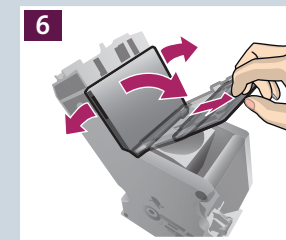
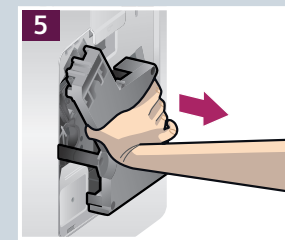
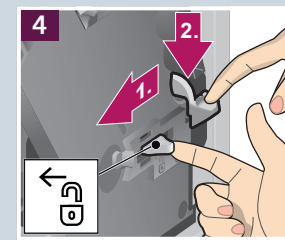
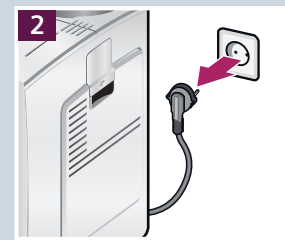
Service-Programm
**Milchsystem
reinigen**
Service Program
Rinse the
milk system



Manuelles Reinigen
Milchsystem
Manual clean
Milk system



Reinigen
Brüheinheit
Clean
Brewing unit



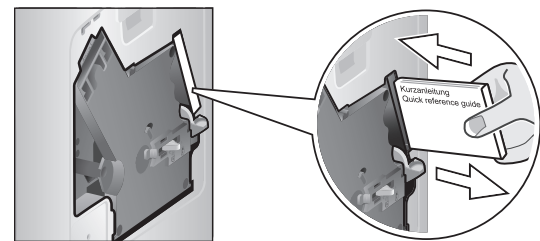
Bitte unbedingt die Sicherheits-
hinweise in der Gebrauchsanleitung
lesen und beachten.

Please read the safety information
in the instruction manual carefully.



Aufbewahrungsfach für
Kurzanleitung

Storage compartment for
quick reference guide



Service-Programm
calc'nClean

Service Program
calc'nClean

1 calc'nClean notwendig → 3 Sek. menu drücken	2	3 3 Sek. 3 sec	4 calc'nClean Fortsetzen: start drücken Abbruch: drücken	5 start stop	6	7	8 1 L 34 fl.oz.	
calc'nClean necessary → press menu for 3 sec			calc'nClean Continue: Press start Cancel: Press					
9 start stop	10	11 max. 0.5 L 17 fl.oz.	12 start stop ca. 20 Min. approx. 20 min.	13 max.	14 start stop ca. 8 Min. approx. 8 min.	15	16	17

Service-Programm
Entkalken

Service Program
Descale

1 Entkalken notwendig → 3 Sek. menu drücken	2	3 3 Sek. 3 sec	4 Entkalken Fortsetzen: start drücken Abbruch: drücken	5 start stop	6	7	8 0.5 L 17 fl.oz.
Descaling necessary → press menu for 3 sec			Descale Continue: Press start Cancel: Press				
9 start stop	10 max. 0.5 L 17 fl.oz.	11 start stop ca. 20 Min. approx. 20 min.	12 max.	13 start stop ca. 1 Min. approx. 1 min.	14	15	16

Service-Programm
Reinigen

Service Program
Clean

1 Reinigen notwendig → 3 Sek. menu drücken	2 max.	3 3 Sek. 3 sec	4 Reinigen Fortsetzen: start drücken Abbruch: drücken	5 start stop	6
Cleaning necessary → press menu for 3 sec			Clean Continue: Press start Cancel: Press		
7	8	9	10 start stop ca. 7 Min. approx. 7 min.	11	12

Hergestellt von BSH Hausgeräte GmbH
unter Markenlizenz der Siemens AG
Manufactured by BSH Hausgeräte GmbH
under Trademark License of Siemens AG

BSH Hausgeräte GmbH
Carl-Wery-Straße 34
81739 München, GERMANY

