

M I S T R A L
- design for your life

31034-E3-P1 /4

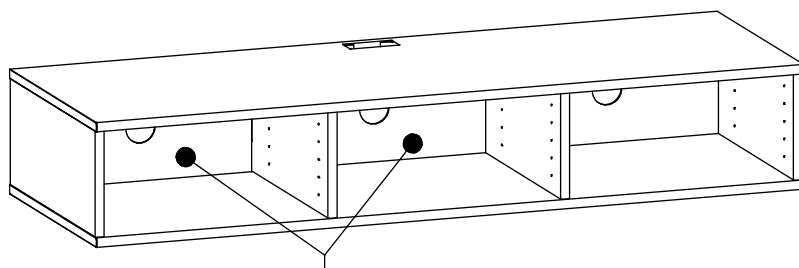
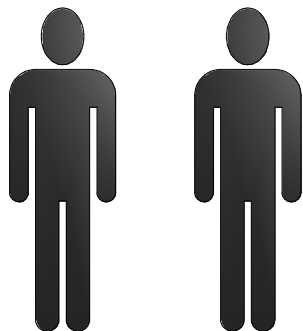
Gulvopstillet: Modulet bruges som leveret.

Placed on the floor: Cabinet is used as delivered.

Bei direkter Bodenmontage: Das Element ist betriebsbereit

Placement au parquet: Le module est utilisé som livré

M31 - 158



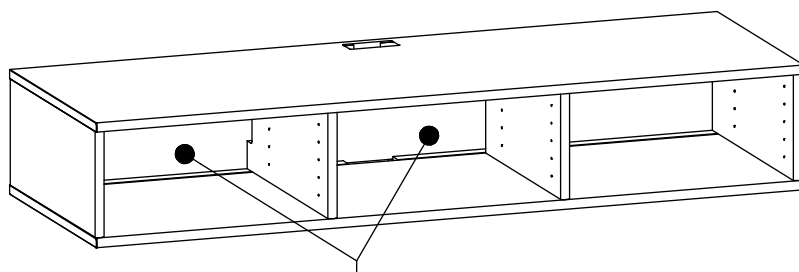
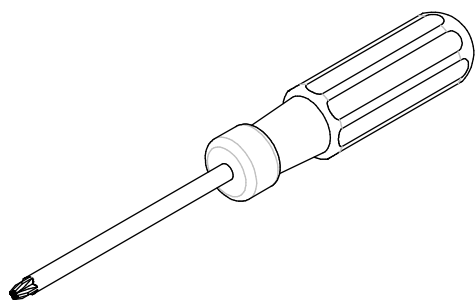
Indvendige bagklædninger
Inside back
Rückwände drinlassen
Revêtement intérieur

Vægophængt: Indvendige bagklædninger udtages før ophængning - og genplaceres efter ophængning.

Mounted on wall: Take out internal backing before mounting and replace them after mounting.

Bei Wandmontage: Bitte Rückwände bevor Wandmontage abnehmen bzw. nach Wandmontage wieder einsetzen.

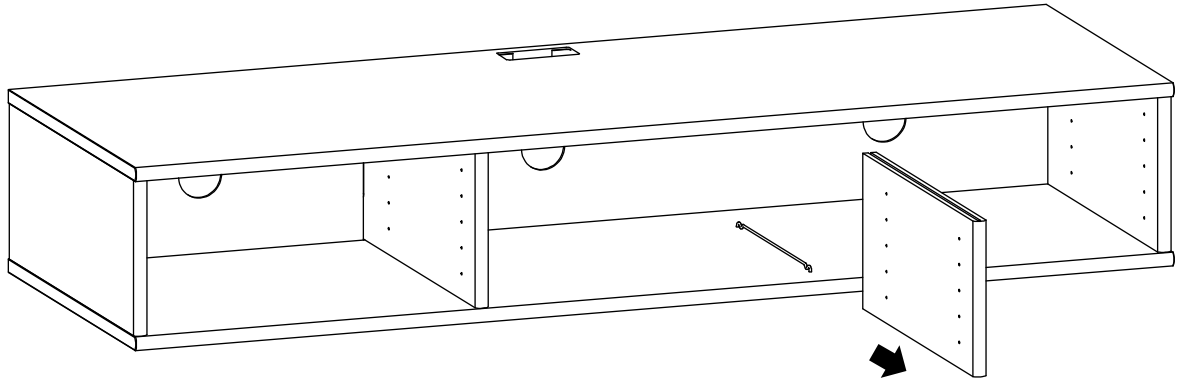
En suspension du module: enlevez-vous le revêtement intérieur avant suspension - et remettez-le après montage.



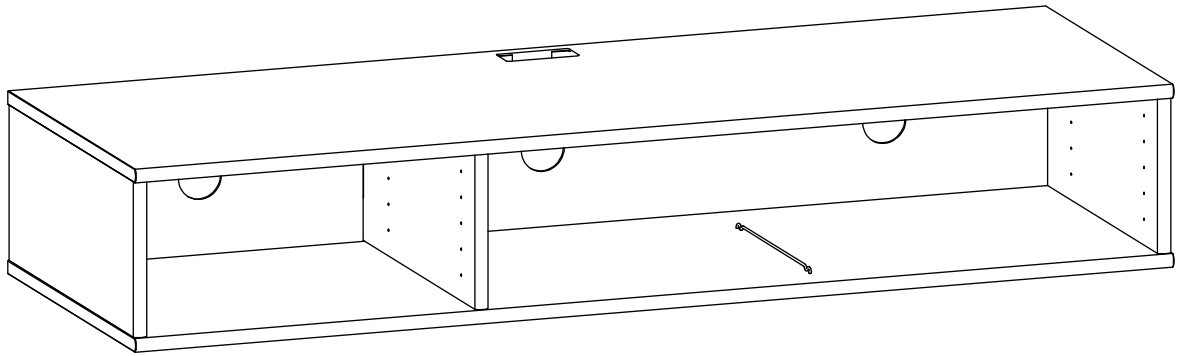
Indvendige bagklædninger - er udtaget
Inside back - out
Rückwände sind abmontiert
Revêtement intérieur - est enlevé

1

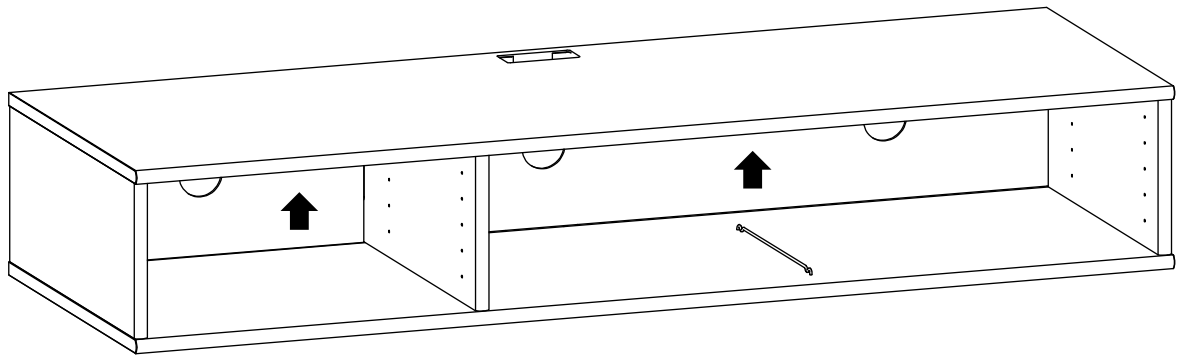
31034-E3-P2 /4



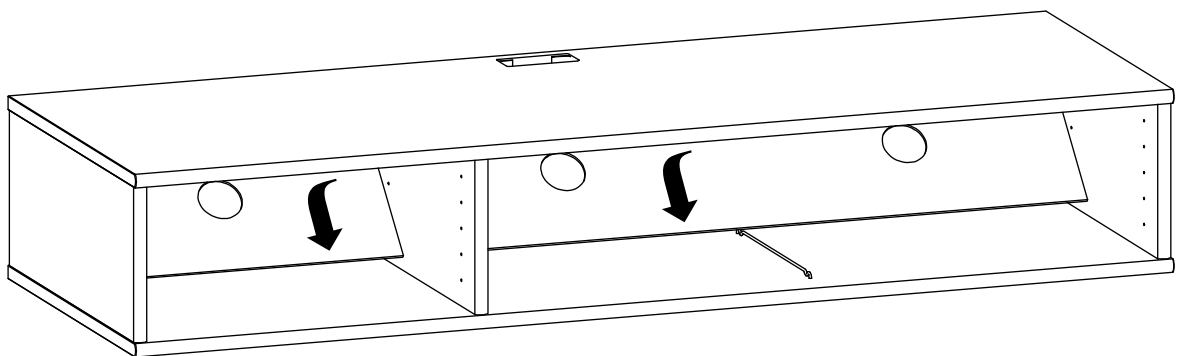
2



3

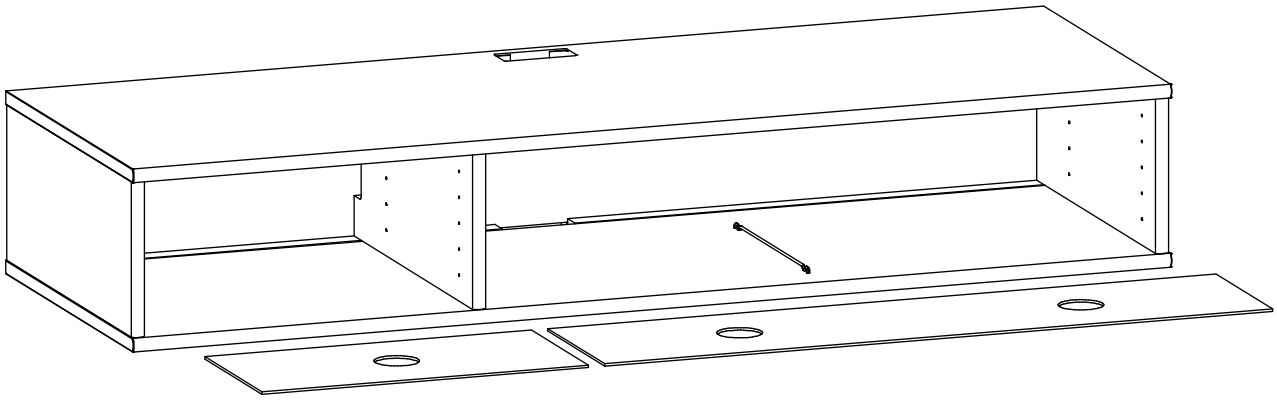


4



5

31034-E3-P3 /4



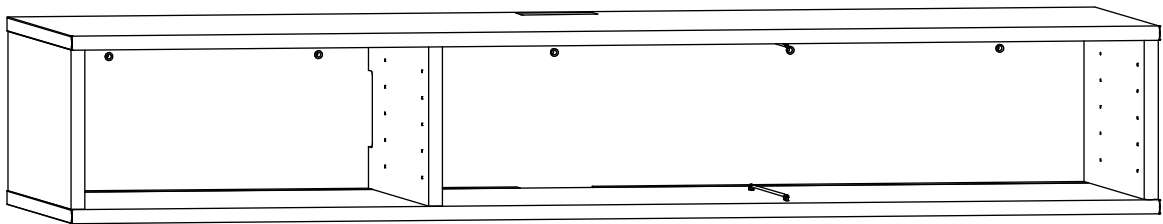
6

Fastgjort til væg med 5 befæstigelses.

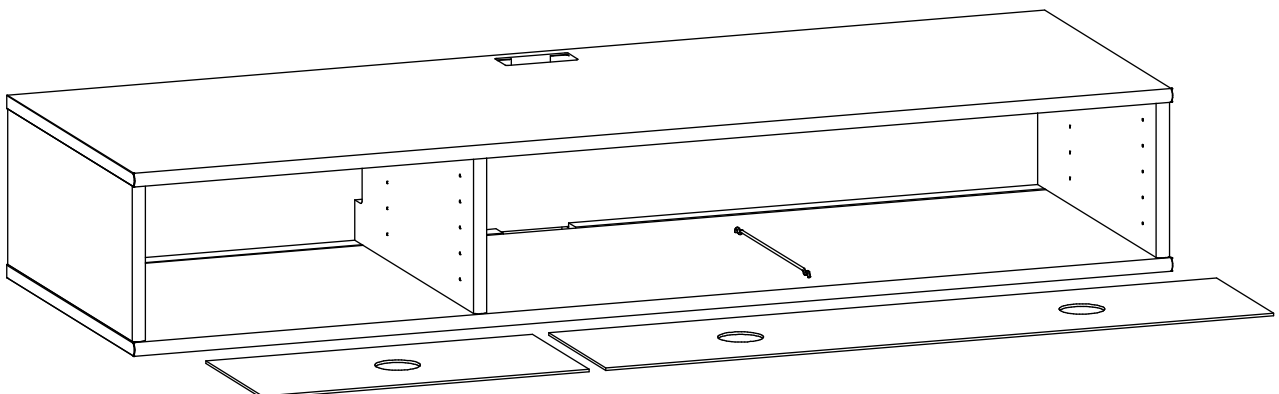
Mounted on wall with 5 screws.

Das Element bitte mit 5 Schrauben an die Wand befestigen.

Le module est monté au mur avec 5 vis.

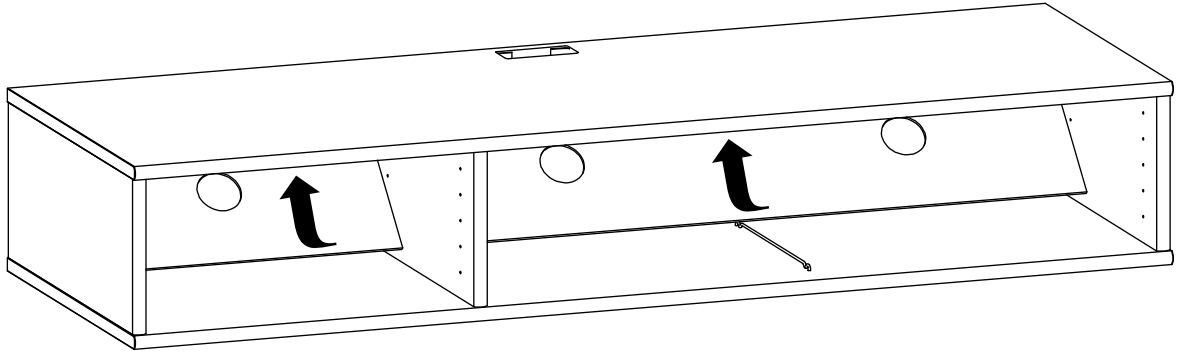


7

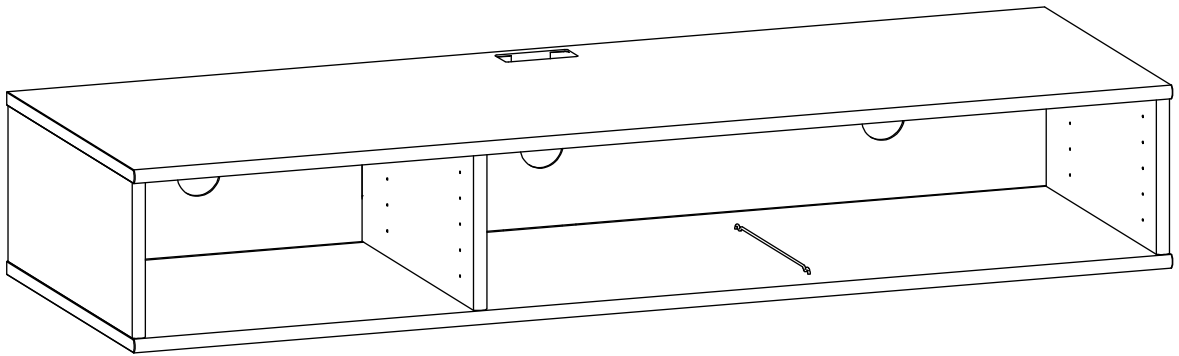


8

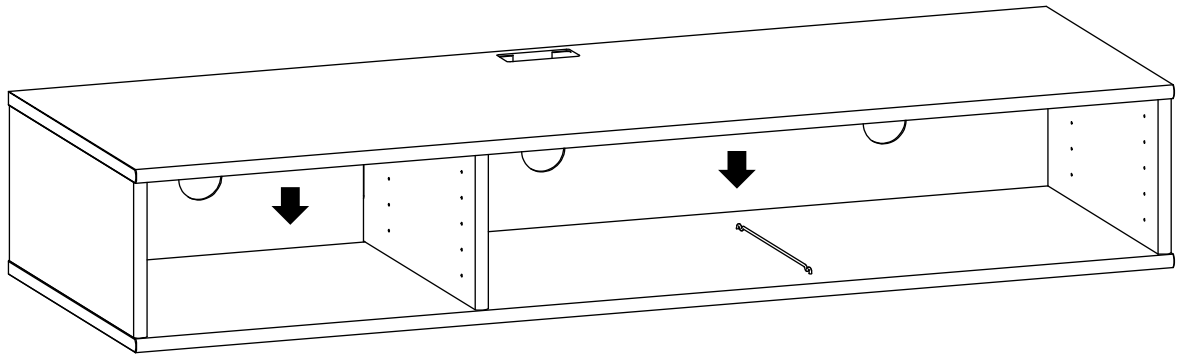
31034-E3-P4 /4



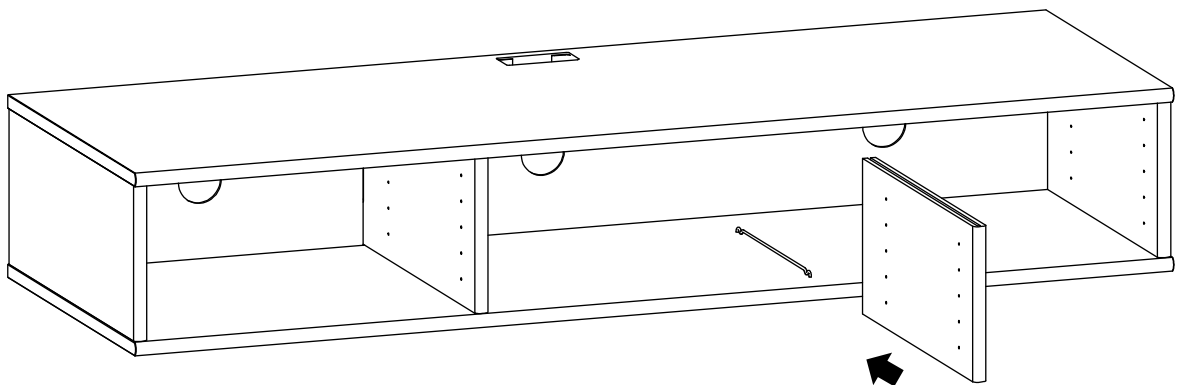
9



10



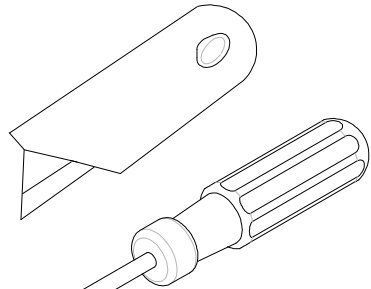
11



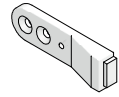
MYSTRAL

- design for your life

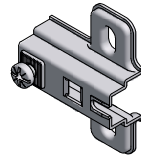
M31 - 141, 142, 143, 144,
147, 151, 152, 153, 157



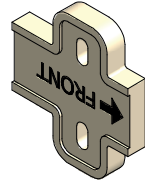
PZ2



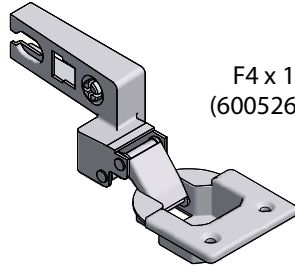
F1 x 2
(3012748)



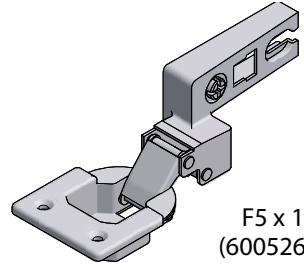
F2 x 2
(6005180)



F3 x 2
(6200338)



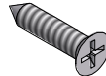
F4 x 1
(6005260)



F5 x 1
(6005261)



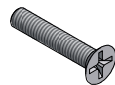
F6 x 6
(6603215)



F7 x 4
(3012124)

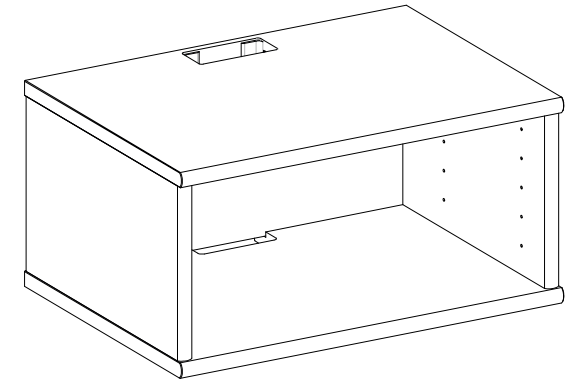
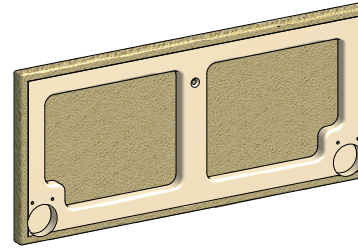


F8 x 1
(4005361)

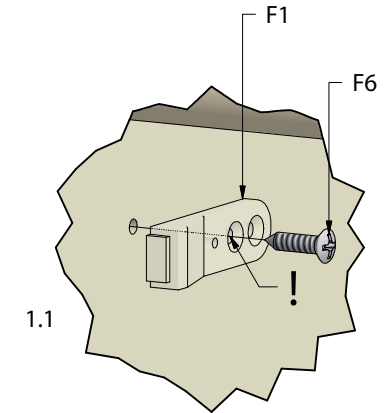
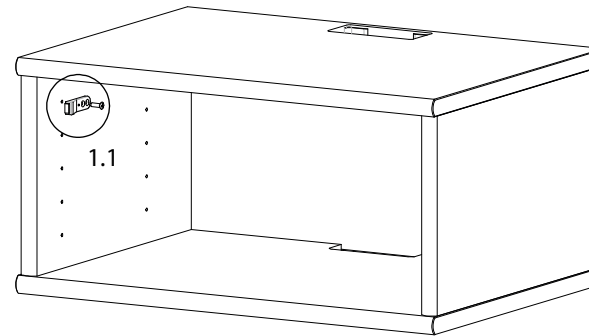


F9 x 1
(6704422)

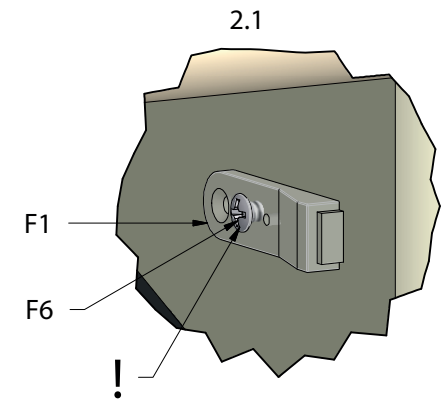
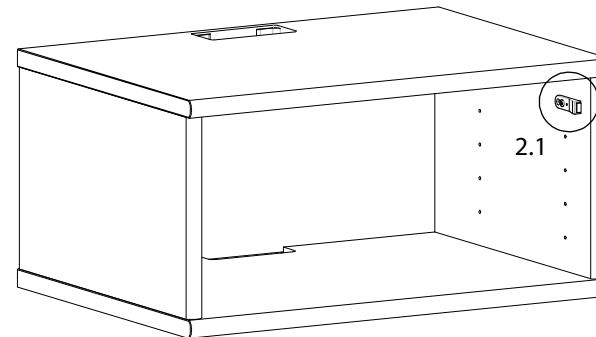
31036-E7-P1/4



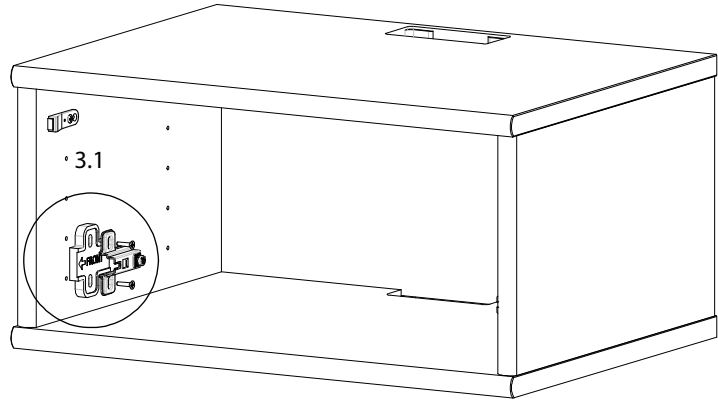
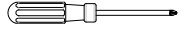
1



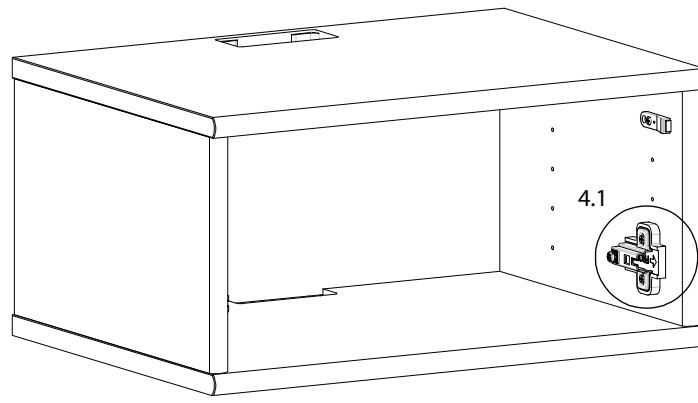
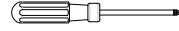
2



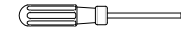
3



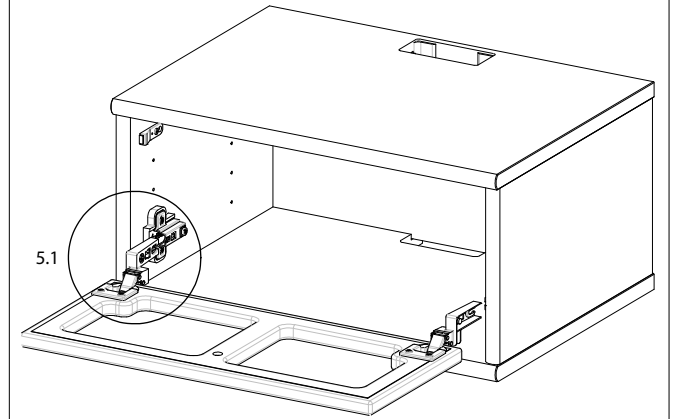
4



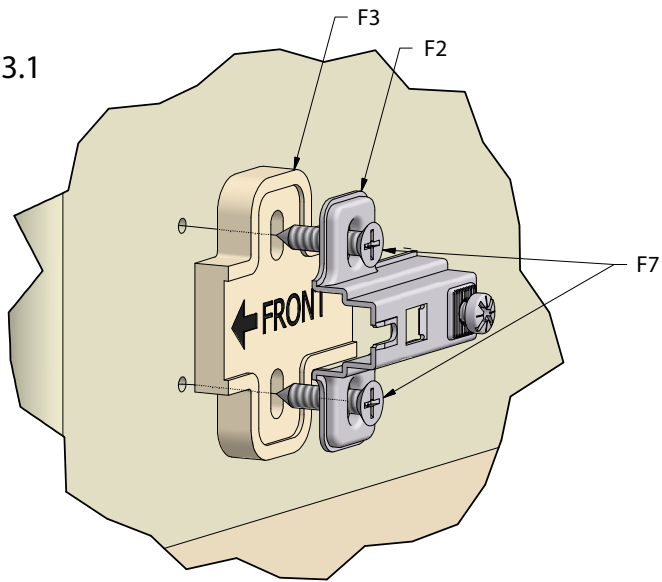
5



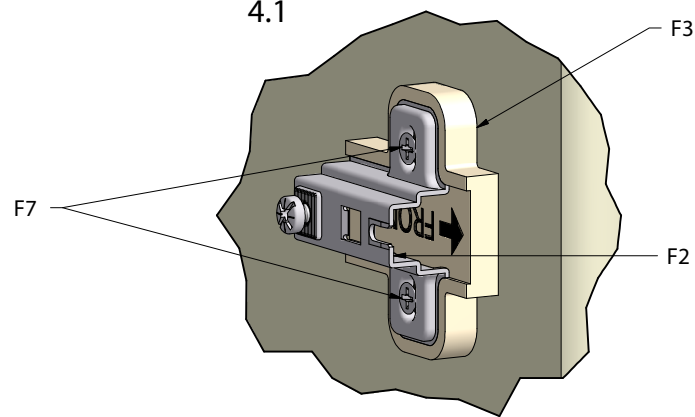
31036-E7-P2/4



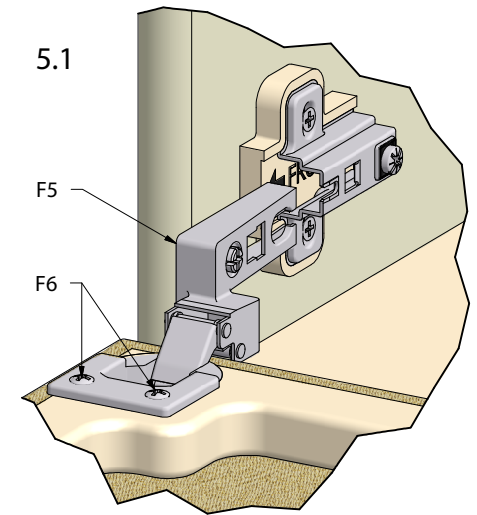
3.1



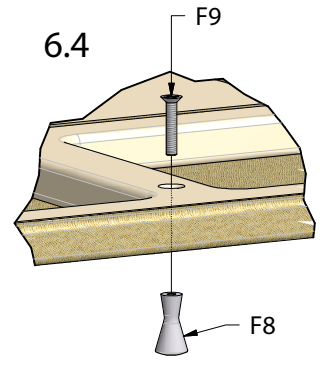
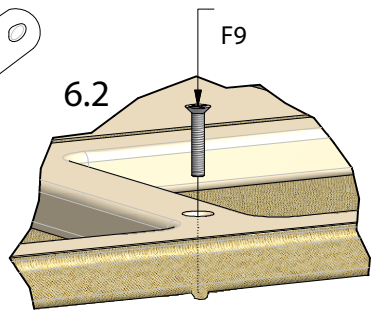
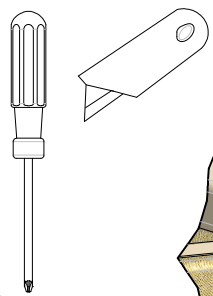
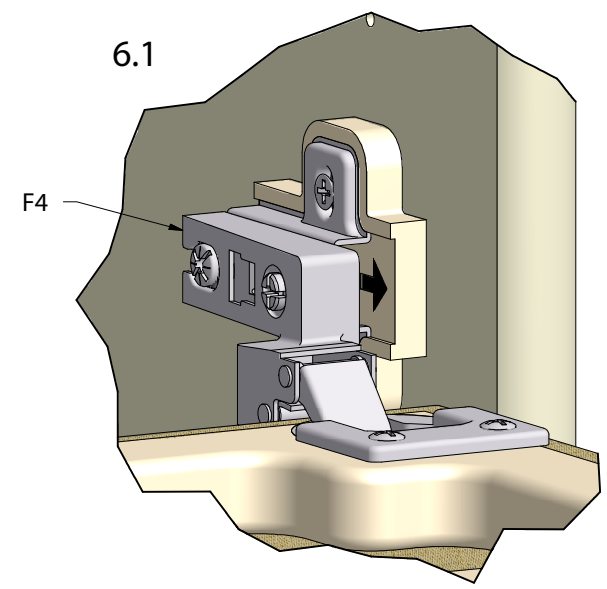
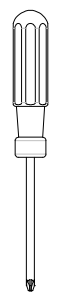
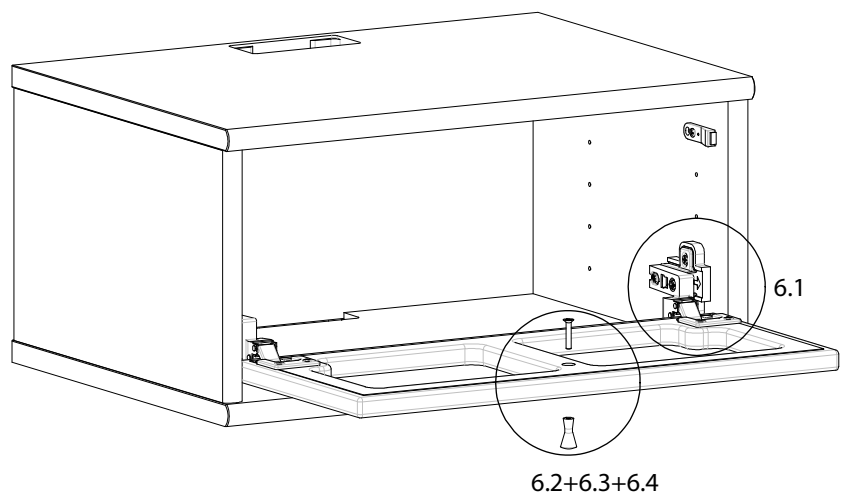
4.1



5.1



6



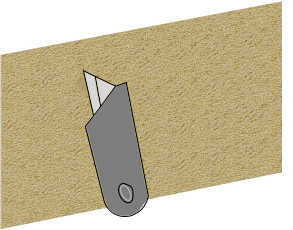
6.3

Skær forsigtigt et lille hul, så skruen kan komme igennem stoffet.

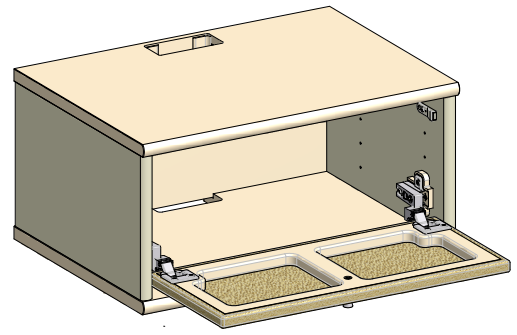
Carefully cut a small hole to allow the screw to pass through the fabric.

Seien Sie vorsichtig und schneiden Sie ein sehr kleines Loch, um die Schraube zu montieren.

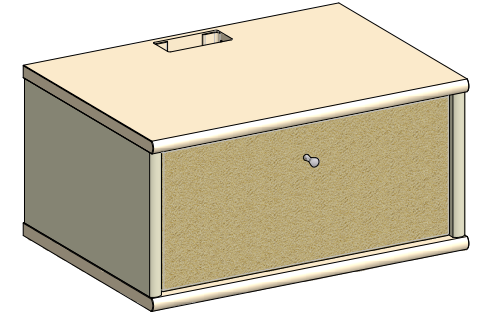
Couper avec précaution un petit trou pour que la vis peut traverser le tissu



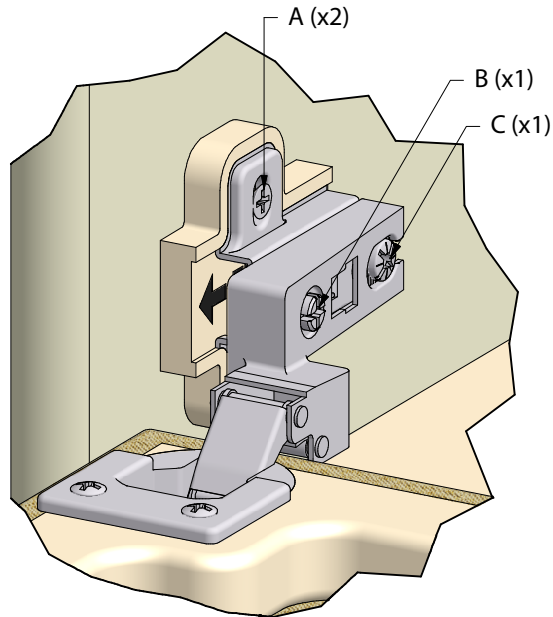
7



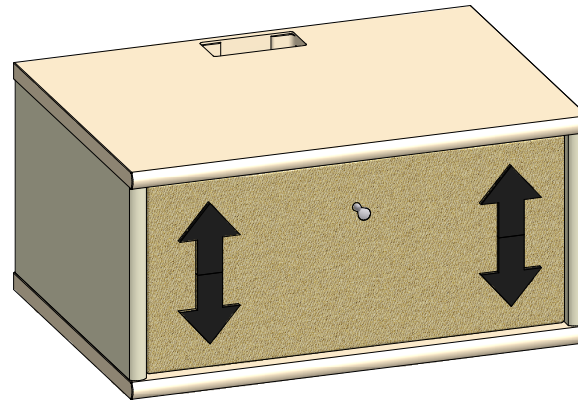
8



Venstre/ Left side/Linke Seite/Côté gauche

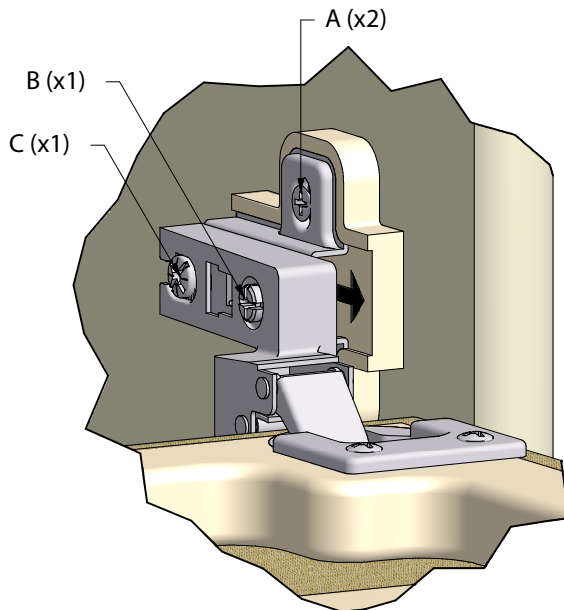


Inde i skabet / Inside cabinet /
im Schrankinneren / à l'intérieur du placard

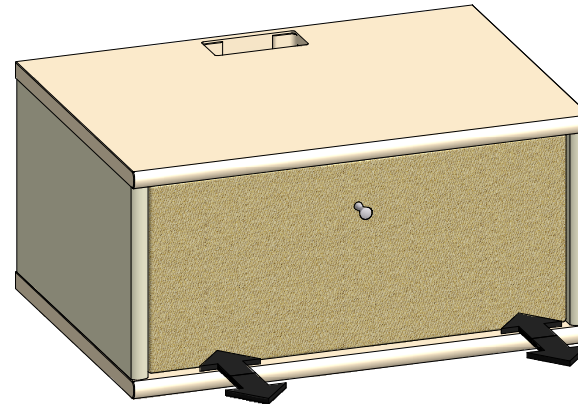


Højdejustering A(x2)
Height adjustment A(x2)
Höhenverstellung A(x2)
Réglage vers le bas/haut A(x2)

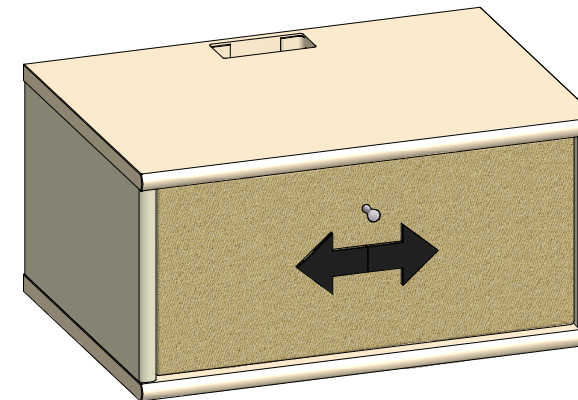
Højre/Right side/Rechte Seite/Côté droit



Inde i skabet / Inside cabinet /
im Schrankinneren / à l'intérieur du placard

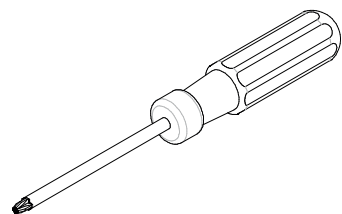


Dybdejustering C(x1)
Depth adjustment C (x1)
Tiefenverstellung C(x1)
Réglage vers l'extérieur/
intérieur C(x1)

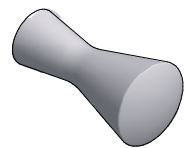
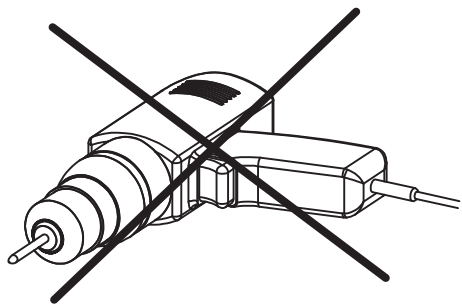


Sidejustering B(x1)
Side adjustment B(x1)
Seitenverstellung B(x1)
Réglage de côté gauche/
droit.

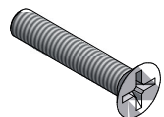
M31 Skuffer / Drawers / Schubladen / Tiroirs



PZ2



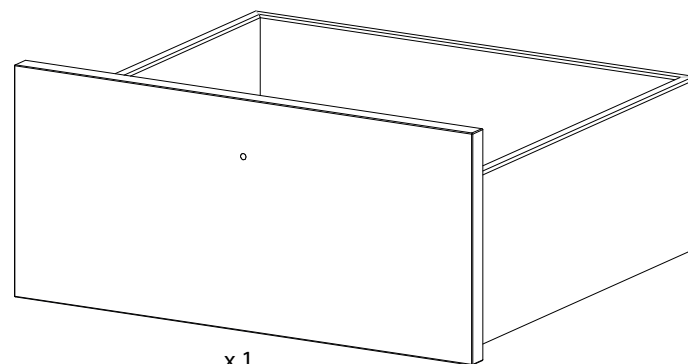
F1 x 1
(4005361)



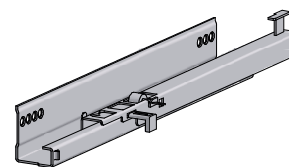
F2 x 1
(6704422)



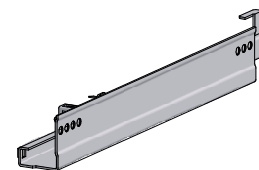
F3 x 4
(6700502)



x 1

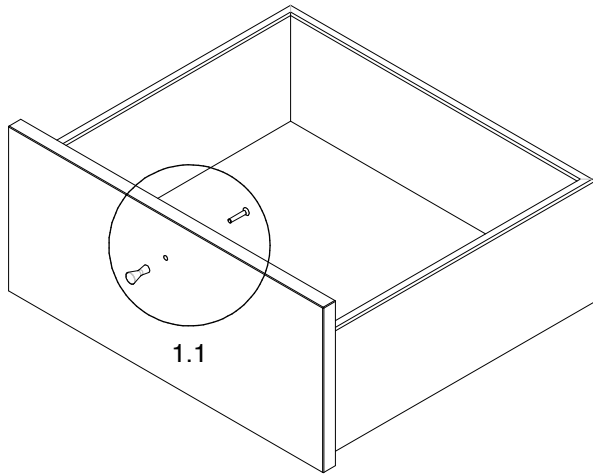


F4L x 1
(6408 650)

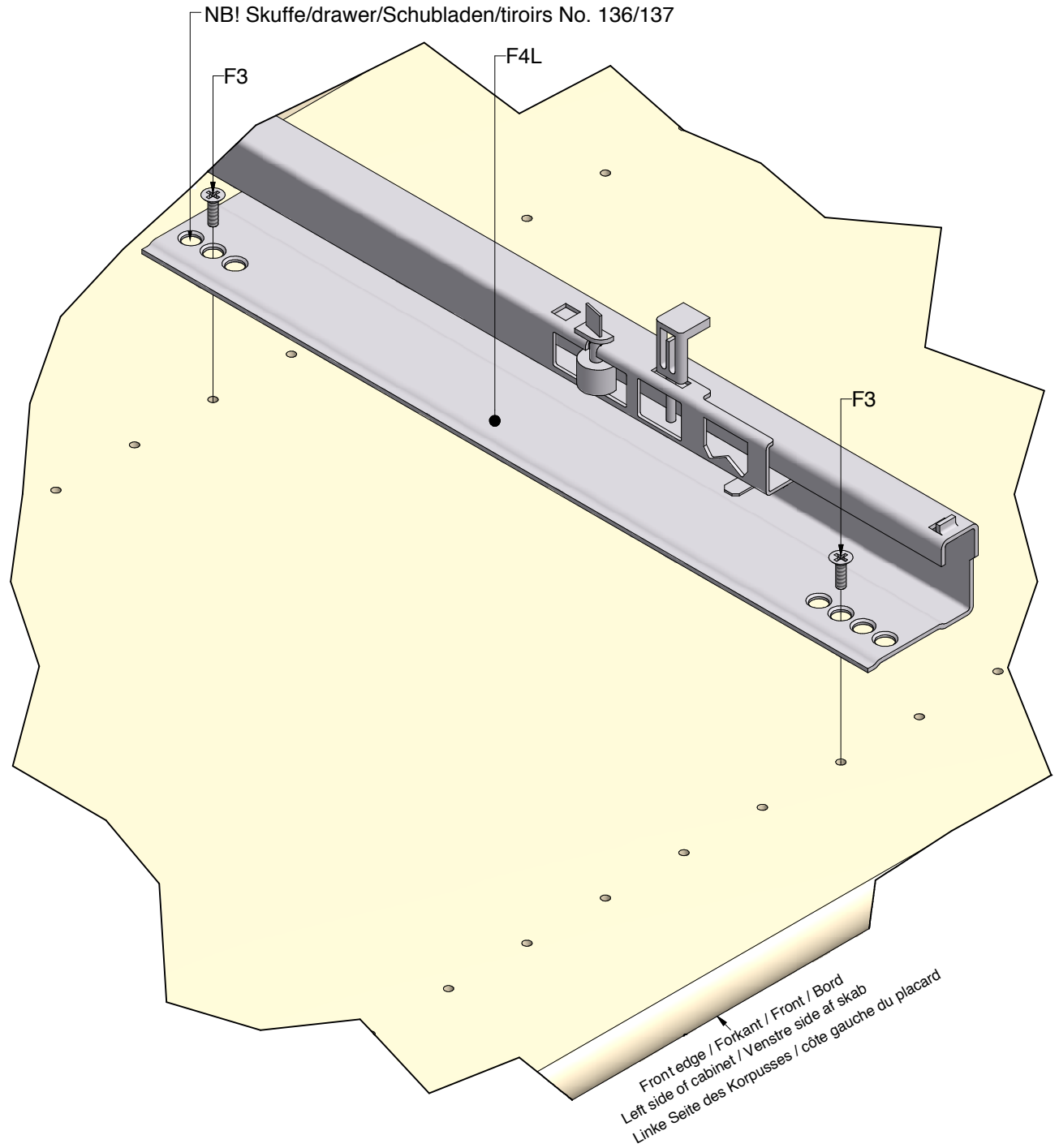


F4R x 1
(6408650)

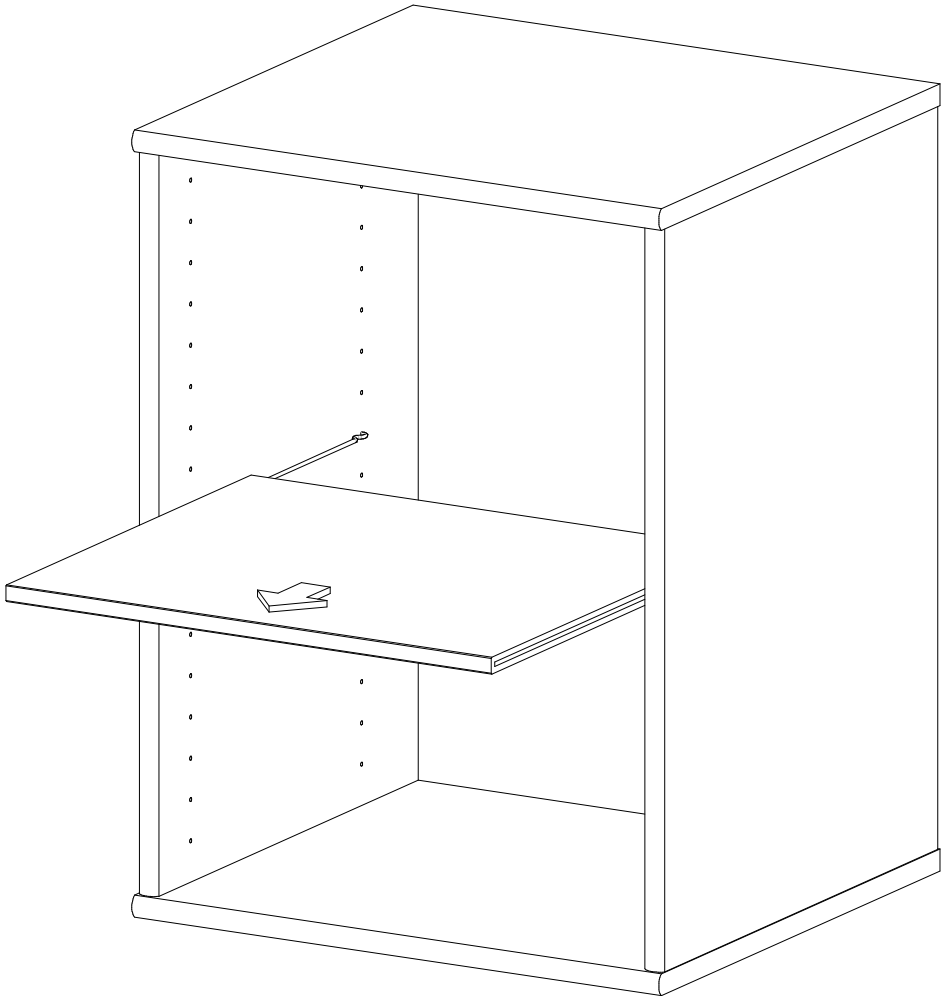
1



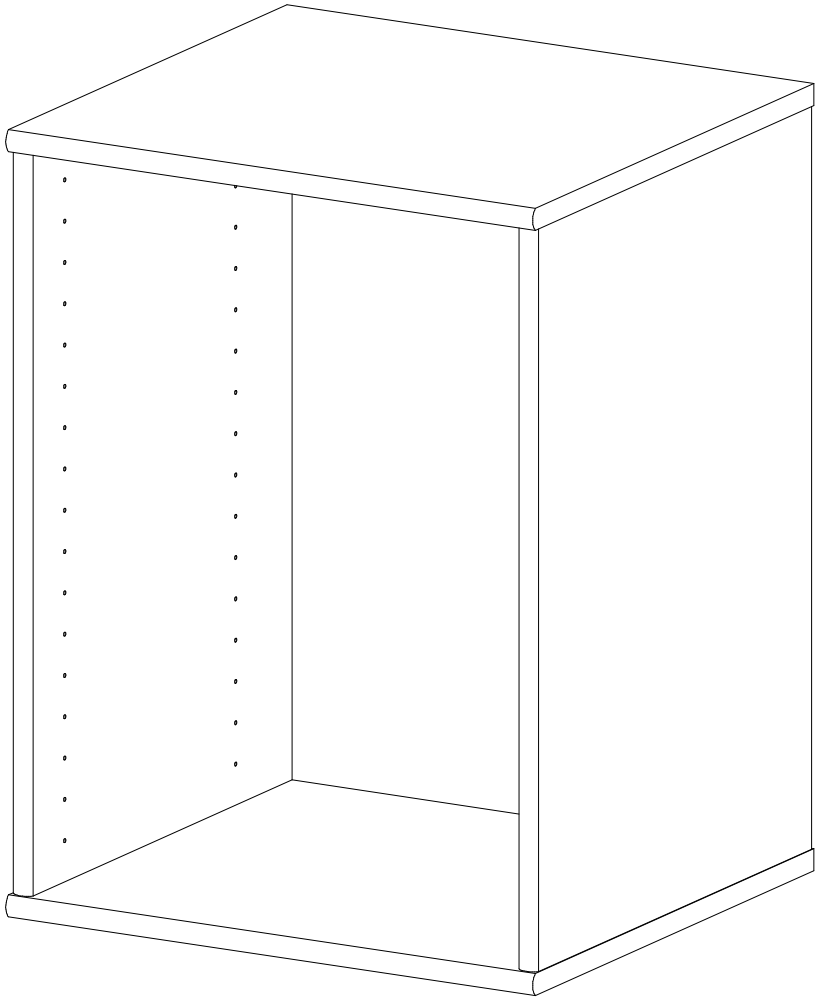
2



3



4



A

How to lock and unlock a drawer and -
how to adjust a drawers vertical position.

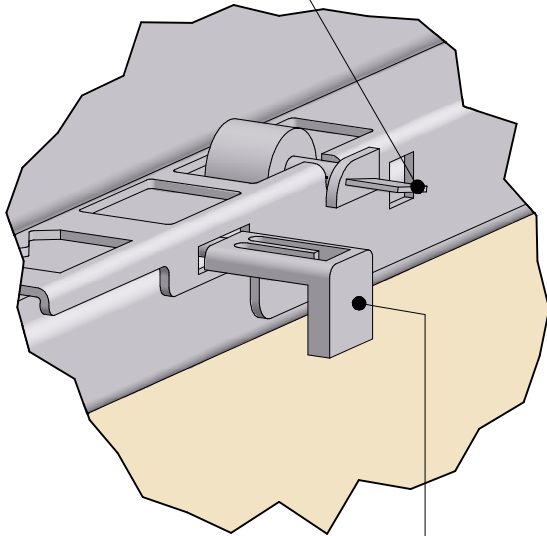
Sådan låses og oplåses en skuffe og -
sådan justeres skuffens lodrette position.

So wird die Schublade montiert bzw. abmontiert,
und so wird die Position der Schublade senkrecht
eingestellt.

Comment on peut fermer et démonter un tiroir et
comment on peut ajuster la position verticale du tiroir.

Turn right or left to adjust drawer position.
Drej til højre eller venstre for justering af skuffeposition.
Bitte rechts oder links drehen, um die Position der
Schublade einzustellen.

Tourner à droit ou gauche pour ajuster
la position du tiroir.

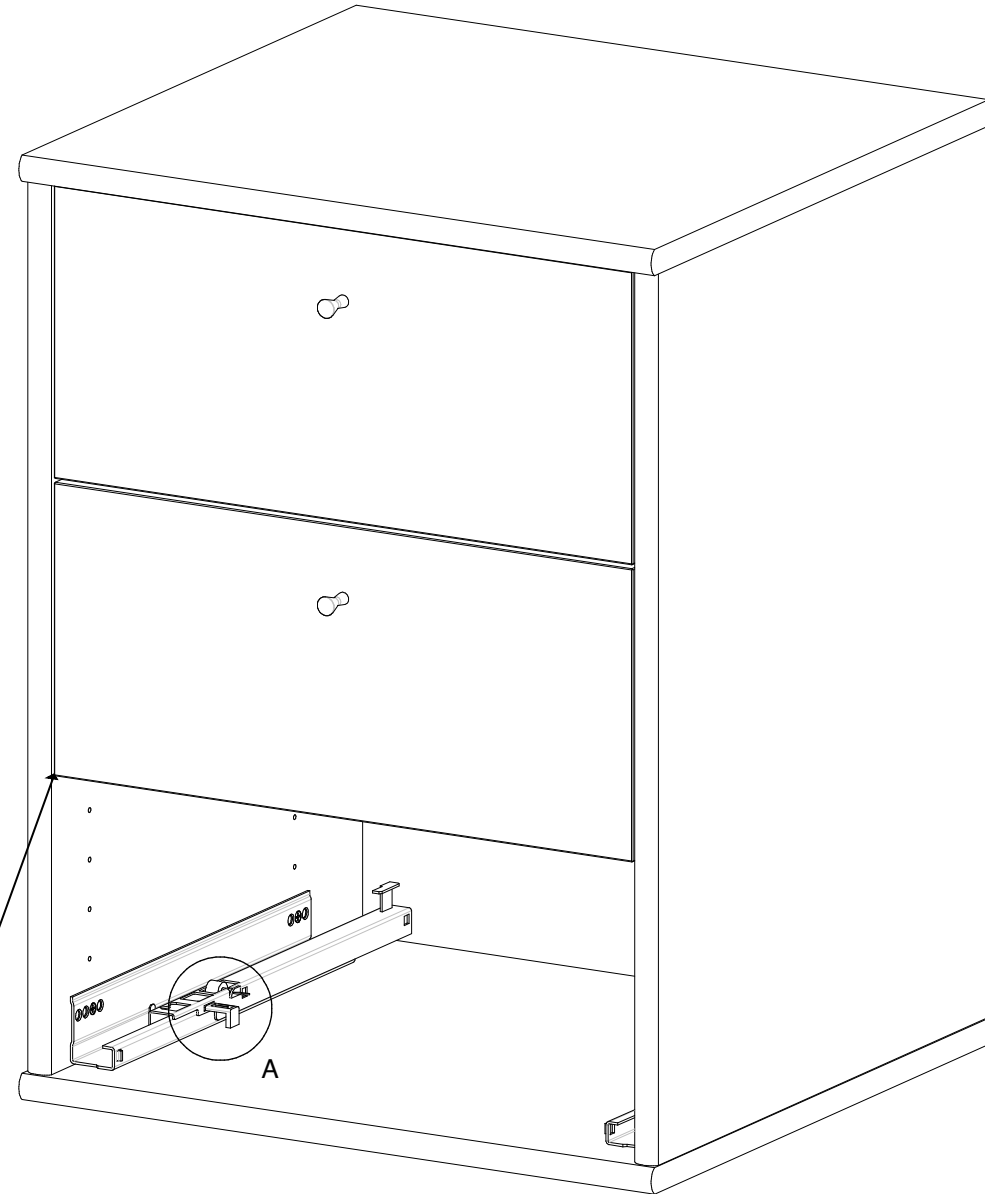


Push to lock. Pull to unlock.

Pres for at låse. Træk for at oplåse.

Schließen: Drücken Sie. Aufschließen: Ziehen Sie.
Pressez pour fermer. Tirez pour démonter

5



(Please observe the drawer is internal).
(Observer venligst, at skuffen sidder indvendigt).
(Bitte beachten Sie, dass die Schublade inwendig montiert werden muss)
(Merci de remarquer, que le tiroir est monté à l'intérieur)